

**Request for Proposal**

**For**

**Professional Qualifications**

**For**

**THE**

**SOUTH FRONT STREET STREETScape**

**Statement of Qualifications**

**Accepted until March 3, 2023**

**Office of the City Engineer**

**2310 Second Street**

**Cuyahoga Falls, Ohio 44221**

## REQUEST FOR PROPOSAL

For

### PROFESSIONAL QUALIFICATIONS

## **SOUTH FRONT STREET STREETSCAPE**

### I. INTRODUCTION

The City of Cuyahoga Falls proposes a streetscape project for South Front Street from Broad Boulevard to Grant Avenue. Cuyahoga Falls must prepare project construction documents for said construction.

Cuyahoga Falls requests proposals to prepare preliminary and final design construction documents and all document preparation associated therewith.

### II. BASIC SCOPE OF SERVICES

The basic scope of services shall include providing tools, materials and labor to perform the following work:

It is anticipated the project will include a centerline and right-of-way survey, field location survey, and new typical section. Improvements will be in accordance with recommendations presented in the attached limited streetscape plan with the intent to relocate utilities underground from January 2023, for reference regarding the remainder of this corridor, and will also include considerations for a right turn lane at Broad Boulevard and a pedestrian and bicycle area between Weller Court and Falls Avenue. South Front Street will also be resurfaced as part of this construction.

The work shall be in two (2) phases. Phase One will include preliminary drawings, meetings with City personnel for comments and estimate of probable cost. Phase Two shall be submittal of final construction drawings in a format suitable for bidding purposes by the City, including but not limited to, construction drawings, specifications, bid quantities and estimate. Final Construction Documents are to be submitted by December 15, 2023. The final submittal shall address all comments. The work shall include but is not limited to:

- A. Prepare centerline layout drawings based on previous surveys and design work, supplemented as needed by field surveys. At this time the Consultant shall recommend to the City a proposed typical section that is in keeping with the character of the area and stays within existing right-of-way and budget, as much as possible.
- B. Prepare plan for the streetscape of South Front Street, including a schematic plan, plan view sheets, pavement alteration sheets including bump out areas with grades, pavement markings plan, typical roadway sections, underground utility relocation plan, pavement and curb details, and storm sewer details.
- C. Work shall include but not be limited to street resurfacing, street trees, street lights, and street tree lawn treatment and sidewalk improvements. Final Plans are to be submitted to the City by December 15, 2023.

### III. GENERAL PROJECT PARAMETERS

#### 1. Design

All design and drafting work shall be performed in accordance with the Ohio Department of Transportation (ODOT) and the Americans with Disabilities Act for review and approval by the City.

#### 2. Progress Documents

Submit three (3) interim sets of documents to the City.

#### 3. Governmental Approval

Submit one (1) complete set of plans to all utility companies within the project area and revised in accordance with their comments. A letter from each utility acknowledging acceptance of the improvements shall be submitted to the City.

### IV. OBJECTIVE

The objective is to request a Statement of Qualifications (SOQ's) to select a qualified engineering firm to complete the engineering services required to design and prepare construction documents for the South Front Street Streetscape. Because the services are

professional services, because qualified consulting engineering efforts could reduce the overall project cost and because the quality of the public improvements depends on the qualifications of the consultant, selection of the engineering consulting firm will be based upon a predetermined set of weighted criteria.

## V. EVALUATION CRITERIA

The following are the primary evaluation criteria the City plans to utilize to select the best-qualified firm. In addition to the evaluation criteria, the city will be looking at design and engineering experience in roadway design. Selection is very subjective in many areas and the decision of the City Administration will be final and not subject to re-evaluation by the firms submitting a Statement of Qualifications.

- Responsibility and stability – such considerations as length of time firm has been in business, length of time principals have been with firm, financial responsibility, professional liability coverage, etc.
- Experience – such considerations as other similar projects completed by the firm, similar design projects completed by key personnel of the firm, support staff abilities, range of in-house capabilities, etc.
- Location – Such consideration as location of firm's office that will be responsible for project coordination, previous work in the general geographic area, key project personnel office location, etc. Lower project costs should result if limited travel expenses are required and better communication can be maintained which should result in a higher quality project.
- Quality of work – Such considerations as adequateness of material supplied to permit evaluation, evaluation, quality of presentation, cooperation, concern, etc.
- Time schedule and anticipated man-hours to complete the project.

The City will accept SOQ's until 4:00 p.m., March 3, 2023. Consultants must submit their SOQ's electronically to the City of Cuyahoga Falls Engineering Department Email, at [Engineering@cityofcf.com](mailto:Engineering@cityofcf.com). The subject line of the email should read "Statement of Qualifications for Professional Engineering Services, Design of the South Front Street Streetscape."

The City retains the option of rejecting or accepting any Statement of Qualifications. Should a firm be selected and the City can not negotiate a

contract with the selected firm ranked best qualified, the City shall inform the firm in writing of the termination of negotiations and enter into negotiations with the firm ranked next best qualified. If negotiations again fail, the same procedure shall be followed with each next best-qualified firm selected until a contract is negotiated. However, the City retains the right to reject all SOQ's and initiate the process of obtaining SOQ's from qualified engineering firms at a later date.

#### VI. Statement of Qualifications

The specific format of the Statement of Qualifications (SOQ's) shall be per the responding firm's judgment. However, shall include the following data:

1. Two-page project summary narrative defining the firm's interpretation of the scope of the project and approach to engineering and design.
2. Project personnel organization.
3. Firm Profile.
4. Principal Profile.
5. Technical Expertise Profile.
6. General anticipated project schedule or time line.
7. General anticipated man-hours to complete the project based on past experience.
8. Additional pertinent information

The City requests that, in addition to a general list of representative projects, responding firms select one or two of its completed projects of similar size and scope. The selected project shall be a project that has been completed for at least three years but no more than five years. A detailed description of services rendered, the name, mailing address and phone number of the client's project manager, and the name and mailing of the general contractor.

The responding firms are also requested to provide a proposed project team that will most likely work on this project. Members should include personnel from the partner down to the engineer-in-training level. Sub-professional: level employees not providing a significant role on the project do not need to be included.

A resume of each member of the team is needed and should detail relevant experience, length of service with the firm, educational background, and professional background. Sub-consultant's roles on the project should also be listed.

## VII. INTERVIEWS

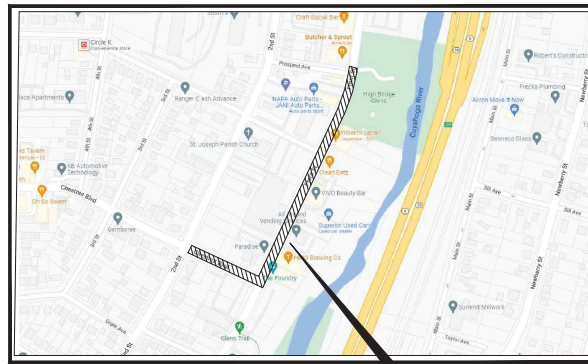
The City reserves the right to conduct face-to-face interviews with any, all, or none of the responding firms. In the event the City selection committee deems interviews necessary to select the best firm, the City will establish a meeting at a mutually acceptable time at City office. The City selection committee will meet key members of the firm's proposed project team. It shall be the selection committee's sole decision on whether any interviews are held and with which firms interviews are held.

# SOUTH FRONT STREET STREETScape

S.W. QTR. SEC. 5  
CUYAHOGA FALLS, SUMMIT COUNTY, OHIO

## SITE PLAN LEGEND

EXISTING	PROPOSED	
---	---10---	CENTERLINE/BASELINE CONSTRUCTION
---	---	PROPERTY LINE
---Ex R/W---	---R/W---	RIGHT OF WAY
---	---	EASEMENT
---	---TMP---	TEMPORARY RIGHT OF WAY
---	---	CONTOUR
---	---	SWALE (EDGE OF WATER)
---	---	FENCELINE
---	---	GUARDRAIL
---	---	RAILROAD TRACKS
---ST---	---X <sup>1</sup> STM---	STORM SEWER
---SA---	---X <sup>1</sup> SAN---	SANITARY SEWER
---FM---	---X <sup>1</sup> SAN---	SANITARY SEWER FORCEMAIN
---W---	---X <sup>1</sup> WTR---	WATER LINE
---G---	---X <sup>1</sup> GAS---	GAS LINE
---COM---	---COM---	GENERIC COMMUNICATIONS LINE
---CTV---	---CTV---	CABLE TV LINE
---E---	---E---	ELECTRIC LINE
---FO---	---FO---	FIBER OPTIC LINE
---STE---	---STE---	STEAM LINE
---T---	---T---	TELEPHONE LINE (UNDERGROUND)
---TR---	---TR---	TRAFFIC SIGNAL CONDUIT
---TIC---	---TIC---	TRAFFIC INTERCONNECT CONDUIT
		STORM MANHOLES, CATCH BASINS, CURB INLETS
		SANITARY MANHOLE, CLEANOUT, MARKER, VENT PIPE, SEPTIC TANK LID
		FIRE HYDRANT, HYDRANT ASSEMBLY, WATER VALVE, METER, SERVICE BOX
		GAS METER, VALVE, MANHOLE, MARKER, VENT PIPE
		GROUND MOUNTED TRANSFORMER, ELECTRIC PULL BOX, METER, MANHOLE, VAULT
		SIGNAL POLE, TRAFFIC PULL BOX, MANHOLE, CONTROLLER CABINET, PAD MOUNTED CABINET
		CABLE TV BOX, TELEPHONE BOX, AIR CONDITIONER, SATELLITE DISH, CELLPHONE TOWER, GROUND LITE
		MONITORING WELL, GAS WELL, OIL WELL, CISTERN, SOIL BORING
		TELEPHONE BOX, TELEPHONE MANHOLE, UNKNOWN UTILITY BOX, UNKNOWN MANHOLE
		POWER POLE, TELEPHONE POLE LIGHT POLE, COMBINATION POLES, GENERIC/GUY POLE, GUY WIRE
		STREET SIGNS, STREET NAME SIGN, POST, MAILBOX, FLAG POLE, FLAG
		DECIDUOUS TREE, EVERGREEN, SHRUB, STUMP, ROCK, TREE REMOVED/PRUNED
		MONUMENT BOX, IRON PIN/PIPE



0 100 200  
GRAPHIC SCALE IN FEET

LOCATION MAP

PROJECT LOCATION

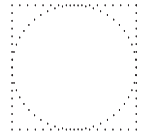
ODOT STANDARD CONST DRAWINGS	SUPPLEMENTAL SPECIFICATIONS		
SID. DWG. NO.	DATE	SECC. NO.	DATE
BP-3.1	1/21/2022	800	7/15/2022
BP-5.1	7/15/2022	875	1/18/2019
BP-7.1	1/21/2022		
DM-1.2	7/16/2021		
*CB-2-2A,B,C	7/16/2021		
*CB-3, CB-3A	7/16/2021		
MH-3	7/16/2021		
MT-97.11	1/20/2017		
MT-110.10	7/19/2013		
TC-41.20	10/18/2013		
TC-42.20	10/18/2013		

\*USE 6-INCH HIGH FRAME WITH CB-2-2C  
\*\*SEE CB-3 and CB-3A MODIFIED DETAIL ON SHEET 50

INDEX OF DRAWINGS	
TITLE	1
GENERAL NOTES	2-3
SCHEMATIC PLAN	5
SWPPP	6-8
TYPICAL SECTIONS	9-10
DEMOLITION PLAN	11
MAINTENANCE OF TRAFFIC PLAN	12
PLAN & PROFILES	13-15
GRADING & LAYOUT PLAN	17-18
CURB & INTERSECTION DETAILS	19
PAVEMENT MARKING & SIGNAGE PLAN	20
LANDSCAPE PLAN	21
CONSTRUCTION DETAILS	22-23
LIGHTING DETAIL	24

APPROVALS:	
_____	TONY DEMASI, PE CITY ENGINEER

PLANS PREPARED AND RECOMMENDED BY:



## 2019 SPECIFICATIONS

THE STANDARD SPECIFICATIONS OF THE STATE OF OHIO, DEPARTMENT OF TRANSPORTATION, INCLUDING CHANGES AND SUPPLEMENTAL SPECIFICATIONS LISTED IN THESE PLAN BID DOCUMENTS SHALL GOVERN THIS IMPROVEMENT. FOR PURPOSES OF THIS PLAN, REFERENCES TO DIRECTOR OR ENGINEER SHALL BE CONSTRUED TO MEAN THE CITY ENGINEER AND/OR HIS REPRESENTATIVES.

REVISED:		SET NO.	
PROJ. NUMBER	21-00525-010	TITLE	SHEET 1 of 24
DESIGNED BY:	SRB		
DRAWN BY:	EDG		
FILE NO.	ZTITL 21-00525-010.dwg		







GENERAL NOTES

1. LOCAL GOVERNMENT REQUIREMENTS TOGETHER WITH THE LATEST EDITION (2016) OF THE STATE OF OHIO DEPT. OF TRANSPORTATION ON CONSTRUCTION AND MATERIAL SPECIFICATION (CMS) SHALL GOVERN ALL CONSTRUCTION ITEMS THAT ARE A PART OF THIS PLAN, UNLESS OTHERWISE NOTED. IF THERE ARE ANY DISCREPANCIES, THE LOCAL GOVERNMENT REQUIREMENTS SHALL GOVERN, ALL FIELD TESTING SHALL BE THE RESPONSIBILITY OF THE CONTRACTOR (MATERIAL COMPOSITION, MATERIAL COMPARISON, CONCRETE TESTING, ETC.) THE CONSTRUCTION OF THIS PROJECT SHALL BE GOVERNED BY THE CITY OF CUYAHOGA FALLS SPECIFICATIONS (1976 EDITION ON FILE WITH THE DEPARTMENT OF ENGINEERING.
2. ANY MODIFICATION TO THE SPECIFICATIONS OR CHANGES TO THE WORK AS SHOWN ON THESE DRAWINGS MUST HAVE PRIOR WRITTEN APPROVAL OF THE LOCAL GOVERNMENT AUTHORITY.
3. THE CONTRACTOR AND SUBCONTRACTOR SHALL BE SOLELY RESPONSIBLE FOR THE PROTECTION OF EXISTING UTILITIES AND STRUCTURES, EITHER WITH EXISTING PRECAUTIONS AT ALL TIMES FOR THE PROTECTION OF PERSONS (INCLUDING EMPLOYEES) AND PROPERTY. IT IS ALSO THE SOLE RESPONSIBILITY OF THE CONTRACTOR AND SUBCONTRACTORS TO INITIATE, MAINTAIN AND SUPERVISE ALL SAFETY REQUIREMENTS PRECAUTIONS AND PROGRAMS IN CONNECTION WITH THE WORK.
4. THE CONTRACTOR SHALL NOTIFY THE CITY AT LEAST TWO (2) WORKING DAYS PRIOR TO COMMENCING CONSTRUCTION.
5. THE CONTRACTOR SHALL OBTAIN ALL NECESSARY PERMITS, PRIOR TO CONSTRUCTION.
6. EXISTING UTILITIES SHOWN ARE FROM BEST AVAILABLE RECORDS AND FIELD INVESTIGATION, AND ARE NOT NECESSARILY COMPLETE OR EXACT. THE CONTRACTOR IS RESPONSIBLE FOR THE INVESTIGATION, LOCATION, SUPPORT, PROTECTION, AND RESTORATION OF ALL EXISTING UTILITIES AND APPURTENANCES WHETHER SHOWN ON THESE PLANS OR NOT. THE CONTRACTOR SHALL EXPOSE ALL UTILITIES OR STRUCTURES PRIOR TO CONSTRUCTION TO VERIFY THE VERTICAL AND HORIZONTAL EFFECT ON THE PROPOSED CONSTRUCTION AND SHALL MAKE ADJUSTMENTS IN ELEVATIONS TO PROVIDE SUFFICIENT CLEARANCE BETWEEN THE PROPOSED AND EXISTING UTILITIES. THE CONTRACTOR SHALL CALL THE OHIO UTILITIES PROTECTION SERVICE (811) TWO WORKING DAYS PRIOR TO WORK.
7. ANY PROPERTY CORNER PINS OR PERMANENT SURVEY MARKINGS DISTURBED DURING CONSTRUCTION SHALL BE RESET BY A REGISTERED SURVEYOR AT THE CONTRACTORS EXPENSE.
8. THE TRACKING OR SPILLAGE OF MUD, DIRT, OR DEBRIS UPON STREETS IS PROHIBITED AND ANY SUCH OCCURRENCE SHALL BE CLEANED UP IMMEDIATELY BY THE CONTRACTOR. IF THE CONTRACTOR FAILS TO KEEP THE WORK AREA CLEAN OF DEBRIS, OR FAILS TO CLEAN MUD OR DIRT OFF OF STREETS, THE CITY MAY TAKE ACTION AND ASSESS THE CONTRACTOR FOR THE COSTS THAT ARE INCURRED.
9. NO NON-RUBBER TIRE VEHICLE SHALL BE MOVED ON STREETS; EXCEPTIONS MAY BE GRANTED WHERE SHORT DISTANCES AND SPECIAL CIRCUMSTANCES ARE INVOLVED. ANY GRANTING OF EXCEPTIONS MUST BE IN WRITING, AND ANY RESULTING DAMAGE MUST BE REPAIRED TO THE SATISFACTION OF THE CITY ENGINEER.
10. THE CONTRACTOR SHALL BE RESPONSIBLE FOR MAINTAINING MAIL SERVICE IN THE CONSTRUCTION AREA.
11. ALL ITEMS OF WORK CALLED FOR ON THE PLANS FOR WHICH NO SPECIFIC METHOD OF PAYMENT IS PROVIDED SHALL BE PERFORMED BY THE CONTRACTOR AND THE COST OF SAME SHALL BE INCLUDED IN THE PRICE BID FOR THE VARIOUS RELATED ITEMS.
12. THE CONTRACTOR SHALL EXERCISE EXTREME CAUTION WHEN EXCAVATING IN THE VICINITY OF EXISTING TREES, TAKING ALL MEASURES POSSIBLE TO PROTECT AND PRESERVE THEM. THE CONTRACTOR SHALL BE GOVERNED BY THE PROVISIONS OF HIS CONTRACT WITH THE CITY.
13. ALL FIELD TILE BROKEN DURING EXCAVATION SHALL BE REPLACED TO ITS ORIGINAL CONDITION OR CONNECTED TO THE STORM SEWER SYSTEM AS DIRECTED BY THE CITY ENGINEER.
14. APPROVAL OF THESE PLANS IS CONTINGENT ON ALL EASEMENTS REQUIRED FOR THE CONSTRUCTION OF THE WORK BEING SECURED AND SUBMITTED TO THE CITY FOR RECORDING PRIOR TO COMMENCEMENT OF THE WORK, AND NO WORK WHICH REQUIRES AN EASEMENT WILL BE ALLOWED TO PROCEED UNTIL THIS HAS BEEN DONE.
15. ALL TRAFFIC CONTROL DEVICES SHALL BE FURNISHED, ERECTED, MAINTAINED, AND REMOVED AT THE CONTRACTORS EXPENSE. ALL TRAFFIC CONTROL DEVICES SHALL BE FURNISHED WITH TWO (2) COPIES OF WHICH ARE AVAILABLE FROM THE OHIO DEPARTMENT OF TRANSPORTATION, BUREAU OF TRAFFIC, 26 SOUTH FRONT STREET, COLUMBUS, OHIO 43215.
16. STEADY-BURNING, TYPE "C" LIGHTS SHALL BE REQUIRED ON ALL BARRICADES DRUMS AND SIMILAR TRAFFIC DEVICES IN USE AT NIGHT. CONES ARE NOT PERMITTED TO BE USED FOR NIGHT WORK.
17. ALL TRENCHES SHALL BE BACKFILLED OR SECURELY PLATED DURING NON-WORKING HOURS.
18. ACCESS TO ALL ADJOINING PROPERTIES SHALL BE MAINTAINED AT ALL TIMES.
19. ALL AREAS WITHIN THE PUBLIC RIGHT-OF-WAY THAT ARE DISTURBED BY THE PROJECT (MULCHING) OR OTHER APPLICABLE SPECIFICATIONS.
20. AT ALL UTILITY CROSSINGS WHERE THE EXISTING UTILITY IS EXPOSED IN THE TRENCH, THE BACKFILL SHALL CONSIST OF COMPACTED GRANULAR MATERIAL. INCORPORATE WITH ONE (1) INCH DEEPER AND SHALLOWER PIPE, WHERE PROPOSED UTILITIES OR SERVICES CROSS PROPOSED OR EXISTING PAVEMENT AREAS. BACKFILL SHALL BE ODOT ITEM 613 LOW-STRENGTH MORTAR (USM) EXTENDING AT LEAST 3 FEET BEYOND THE BACK OF CURB OR EDGE OF PAVEMENT. COSTS TO BE INCLUDED IN THE PRICE BID FOR RELATED PIPE.
21. IN THE EVENT EXCAVATION FOR THE STREETS IS FROM 0" TO 6" BELOW THAT CALLED FOR ON THE PLANS, THE CONTRACTOR SHALL REPLACE THIS EXCESS EXCAVATED MATERIAL WITH ITEM 304 AGGREGATE, AND SHALL BE PAID FOR BY THE CONTRACTOR.
22. CURB INLETS, MANHOLES, AND CATCH BASINS SHALL BE CHANNELLED AS DIRECTED.
23. IT SHALL BE THE RESPONSIBILITY OF THE CONTRACTOR TO ADEQUATELY BARRICADE THE STREET IN THE VICINITY OF ANY EXPANSION JOINTS UNTIL SUCH TIME AS THE STREET IS OPEN TO TRAFFIC.
24. WHERE NECESSARY TO DISTURB PAVEMENTS OR DRIVEWAYS, THE PAVEMENT SHALL BE SAW CUT IN NEAR STRAIGHT LINES. THE DEPTH OF SAW CUT SHALL BE AT LEAST 2 INCHES.
25. THE CITY ENGINEER WILL NOT BE RESPONSIBLE FOR MEANS, METHODS, PROCEDURES, TECHNOLOGIES, OR CONSEQUENCES OF CONSTRUCTION THE CITY ENGINEER WILL NOT BE RESPONSIBLE FOR SAFETY ON THE JOB SITE OR FOR FAILURE BY THE CONTRACTOR TO PERFORM WORK ACCORDING TO CONTRACT DOCUMENTS.
26. THE CONTRACTOR SHALL RESTRICT CONSTRUCTION ACTIVITY TO PUBLIC RIGHT-OF-WAY AND AREAS DEFINED AS PERMANENT AND/OR TEMPORARY CONSTRUCTION EASEMENTS.
27. THE CONTRACTOR SHALL RESTORE ALL DISTURBED AREAS TO EQUAL OR BETTER CONDITION THAT EXISTED BEFORE CONSTRUCTION, DRAINAGE DITCHES OR WATER COURSES THAT ARE DISTURBED BY CONSTRUCTION SHALL BE RESTORED TO THE GRADES AND CROSS SECTIONS THAT EXISTED BEFORE CONSTRUCTION.
28. ALL SIGNS, LANDSCAPING, STRUCTURES, OR OTHER APPURTENANCES DISTURBED OR DAMAGED DURING CONSTRUCTION SHALL BE REPLACED OR REPAIRED TO THE SATISFACTION OF THE CITY ENGINEER. THE COST OF SUCH WORK SHALL BE PAID FOR BY THE CONTRACTOR.
29. PERMITS TO CONSTRUCT IN THE RIGHT-OF-WAY OF EXISTING STREETS MUST BE OBTAINED FROM THE CITY BEFORE COMMENCING CONSTRUCTION, WHEN OPEN-CUTTING OF EXISTING PAVEMENT IS PERMITTED, CONTROLLED DENSITY BACKFILL WILL BE USED IN PLACE OF COMPACTED GRANULAR BACKFILL, ASPHALT SURFACES SHALL BE HEAT WELDED.
30. WHEN UNKNOWN OR INCORRECTLY LOCATED UNDERGROUND UTILITIES ARE ENCOUNTERED DURING CONSTRUCTION, THE CONTRACTOR SHALL IMMEDIATELY NOTIFY THE CITY ENGINEER.
31. BEFORE RELOCATING ANY MAILBOXES, THE CONTRACTOR SHALL CONTACT THE U.S. POSTAL SERVICE AND RELOCATE ACCORDING TO THE REQUIREMENTS OF THE U.S. POSTAL SERVICE.
32. ALL BENCHMARKS ARE BASED ON UNITED STATES GEOLOGICAL SURVEY (USGS) DATUM.
33. THE CITY ENGINEER IN APPROVING THESE PLANS DOES NOT IN ANY WAY RELIEVE THE DESIGN ENGINEER OF HIS/HER RESPONSIBILITY FOR ACCURATE AND COMPLETE ENGINEERING DESIGN RELATIVE TO THE PLANS.
34. DISTURBED MONUMENT BOXES SHALL BE REMOVED AND REPLACED PER ODOT RM x 1.1 TYPE C ROADWAY MONUMENT.
35. CONTRACTOR IS REQUIRED TO MATCH EXISTING DRIVEWAY ARROW AT INTERSECTION POINT WHERE THE PROPOSED PAVEMENT WILL MEET EXISTING DRIVEWAY ARROW.

DATE: \_\_\_\_\_

REVISIONS	DATE	DESCRIPTION
Δ		
-		
-		
-		
-		
-		
-		
-		
-		
-		
-		
-		

PROJECT NO.:	21-0025-010
DRAWN BY:	EGJ
CHECKED BY:	SWB
DATE PLOTTED:	01/08/2023

CONSTRUCTION SET

GENERAL NOTES  
CUYAHOGA FALLS, CITY OF  
COUNTY OF SUMMIT



**STORM SEWER NOTES:**

- 1. ALL STORM SEWER MATERIALS AND INSTALLATION SHALL BE IN ACCORDANCE WITH THE CURRENT RULES AND REGULATIONS OF THE CITY OF CUYAHOGA FALLS. ALL STORM SEWERS CONSTRUCTED UNDER THIS PLAN SHALL MEET THE REQUIREMENTS OF ODOT CHS ITEM 611.
- 2. ALL STORM SEWER PIPES TO BE ITEM 611 CONDUIT TYPE B. ALL PROPOSED TRENCHES LOCATED UNDER AN EXISTING PROPOSED PAVEMENT SHALL BE BACKFILLED WITH ODOT ITEM 613 LOW STRENGTH WORKING TYPE 2 AND ALL PROPOSED TRENCH EGBS SHALL HAVE A 11 SLOPE LINE STARTING 4 FEET OUT FROM THE TOP OF THE PROPOSED OR EXISTING CURB LINE (EXCLUDING BIKE PATH). SHALL BE FILLED WITH PREMIUM COMPACTED ODOT ITEM 504 LIMESTONE GRANULAR BACKFILL. SUFFICIENT ON-SITE MATERIAL MAY BE USED ABOVE THE 11 SLOPE LINE. THIS MATERIAL SHALL BE COMPATIBLE AND FREE FROM STONES LARGER THAN TWO INCHES, RUBBISH, BIODEGRADABLE OR FROZEN MATERIAL. THE METHOD OF BACKFILLING SHALL BE AS DIRECTED BY THE CITY OF CUYAHOGA FALLS AND SHALL CONFORM TO THE SECTION 611.06-BEDDING AND BACKFILL FOR CONDUIT AS SPECIFIED IN THE STATE OF OHIO DEPARTMENT OF TRANSPORTATION CONSTRUCTION AND MATERIAL SPECIFICATIONS 2016 EDITION. ALL BACKFILL SHALL BE INCLUDED IN THE PRICE BID FOR BACKFILLED ITEM.
- 3. ALL STORM SEWERS TO HAVE ODOT ITEM 611 TYPE 2 BEDDING.
- 4. ALL STORM SEWER CONSTRUCTED UNDER THIS PLAN SHALL MEET THE REQUIREMENTS OF ODOT CHS ITEM 611.
- 5. ALL STORM SEWERS SHALL BE N-12 HOPE OR REINFORCED CONCRETE PIPE (ODOT 706.02) CLASS III OR BETTER WITH PREMIUM O-RING GASKETS WHEN PIPE IS WITHIN THE PUBLIC R/W OR AS NOTED.

**SANITARY SEWER NOTES:**

- 1. ROOF DRAINS, FOUNDATION DRAINS, AND OTHER CLEAN WATER CONNECTIONS TO THE SANITARY SEWER SYSTEM ARE PROHIBITED ON THIS PROJECT.
- 2. ALL SANITARY SEWER MATERIALS, INSTALLATION AND TESTING SHALL BE IN ACCORDANCE WITH THE RULES AND REGULATIONS OF THE DEP.A.
- 3. THE MINIMUM REQUIREMENTS FOR GRAVITY SANITARY SEWER PIPE SHALL BE PVC SDR-35 PLASTIC SEWER PIPE CONFORMING TO ASTM D-3034. ALL JOINTS SHALL CONFORM TO ASTM D-3572. ALL BEDDING SHALL CONFORM TO ASTM D-3521 TYPE I, II OR III.
- 4. MINIMUM CLEARANCE BETWEEN SANITARY SEWER AND WATER LINES SHALL BE 10' HORIZONTAL OR 1'-6" VERTICAL OUTSIDE OF EACH PIPE. MINIMUM CLEARANCE BETWEEN STORM SEWER AND WATER LINES SHALL BE 10' HORIZONTAL OR 1'-6" VERTICAL OUTSIDE OF EACH PIPE.
- 5. A DEFLECTION TEST SHALL BE REQUIRED FOR ALL FLEXIBLE PIPE OF 8 INCH DIAMETER AND LARGER. THE TEST SHALL BE CONDUCTED AT LEAST 90 DAYS AFTER COMPLETION OF BACKFILL AND SHALL BE IN ACCORDANCE WITH ASTM D-3034. THE ALLOWABLE DEFLECTION RATE SHALL NOT EXCEED FIVE (5%) PERCENT.
- 6. ALL SANITARY SEWERS MUST PASS A LOW PRESSURE AIR TEST WHICH SHALL BE CONDUCTED IN ACCORDANCE WITH ASTM F-1417. THE MAX. ALLOWABLE TEST LEAKAGE SHALL BE 100 GALLON OF DIAMETER/MILE/AY.
- 7. MANHOLE CONSTRUCTION SHALL MEET THE REQUIREMENTS OF ASTM C-478 AND C-449. ALL MANHOLES SHALL BE AIR VACUUM TESTED IN ACCORDANCE WITH AND MEET ALL THE REQUIREMENTS OF ASTM C-1248.
- 8. CONNECTIONS TO EXISTING MANHOLES SHALL BE CORE DRILLED, WITH BENCHES AND CHANNELS FORMED AND REPAIRED IN ACCORDANCE WITH D.O.E.S. SPECIFICATIONS.
- 9. THE COST OF ALL DE-WATERING IS TO BE INCLUDED IN THE PRICE BID FOR THE APPROPRIATE BID ITEM.
- 10. RECONNECTIONS TO EXISTING HOUSE LATERALS SHALL BE MADE AT THE RIGHT-OF-WAY LINE. CONNECTIONS BETWEEN RECONSTRUCTED SECTIONS AND EXISTING HOUSE LATERALS SHALL BE CONSTRUCTED USING "MISSION BAND" STYLE COULERS WITH STL BAND SIZE, BY THE CONTRACTOR AND PAID FOR AT THE UNIT PRICE BID ITEM 915, SANITARY LATERAL RECONNECTION.
- 11. THE CONTRACTOR SHALL CONNECT THE EXISTING SANITARY SEWER TO THE PROPOSED OR RECONSTRUCTED MANHOLE BY PROVIDING A LENGTH OF PIPE AS SPECIFIED IN THE PLANS. JOINED TO THE EXISTING PIPE BY A CONCRETE COLLAR AS DETAILED. THE PIPE SUPPLIED TO CONNECT TO THE EXISTING SEWER TO THE MANHOLE SHALL BE THE SAME MATERIAL AS THE EXISTING SEWER. THE COST OF CONNECTING THE EXISTING SANITARY SEWER TO THE PROPOSED OR RECONSTRUCTED MANHOLE SHALL BE INCLUDED IN THE UNIT PRICE BID FOR ITEM 604, MANHOLE ON SANITARY SEWER.
- 12. SANITARY FLOW'S TO BE MAINTAINED AT ALL TIMES. CONTRACTOR SHALL PROVIDE ALL BYPASS PUMPING EQUIPMENT, MATERIALS, FUEL, POWER AND LABOR AS REQUIRED TO MAINTAIN FLOW. ALL COSTS SHALL BE INCLUDED IN THE PRICE BID FOR APPROPRIATE BID ITEM.

**WATERLINE NOTES:**

- 1. ALL PIPE SHALL BE CLASS 53 DUCTILE IRON SLIP-ON JOINT UNLESS OTHERWISE NOTED. ALL FITTINGS AND VALVES SHALL BE MECHANICAL JOINT UNLESS OTHERWISE NOTED. ALL BOLTS AND NUTS ON ALL FITTINGS, VALVES AND HYDRANT BASES SHALL BE STAINLESS STEEL. ALL PIPE AND FITTINGS SHALL BE POLYETHYLENE CARBID ENCASEMENT (COST) SHALL BE INCLUDED IN PRICE BID FOR DUCTILE IRON WATER MAIN.
- 2. ALL TREES, BRUSH, ROOTS, DRENWAY CULVERTS, PAVEMENT EXCESS EXCAVATED MATERIAL AND OTHER ITEMS REMOVED OR DEMOLISHED AS PART OF THIS CONTRACT SHALL BE REMOVED FROM THE PROJECT LIMITS AND DISPOSED OF AT AN APPROVED LANDFILL BY THE CONTRACTOR. COSTS OF SUCH SHALL BE INCLUDED IN THE COSTS OF WATER MAIN IF NONE EXISTS.
- 3. WATER SERVICES ON THE EXISTING MAIN SHALL BE REPLACED FROM THE CURB BOX TO THE NEW MAIN AFTER ALL TESTS ARE COMPLETE. EXISTING COPPER SERVICES MAY BE CONNECTED TO NEW MAIN AT THE CITY'S DISCRETION. CONTRACTOR SHALL DIG TAPPING PIT AT MAIN, SERVICE TRENCH IF NECESSARY, CURB BOX PIT IF NECESSARY AND BACKFILL AFTER TAPPING AND CONNECTIONS ARE COMPLETE. PAVEMENT FOR THIS SHALL BE PER (L.F.) OF COPPER INSTALLED AND EXCAVATION PIT (E.A.) CITY SHALL SUPPLY COPPER, COPR STOP AND CURB STOP AND BOX AND TRENCH CONNECTIONS. EXISTING SERVICE LINES REMOVED SHALL BE PROPERTY OF THE CITY WATER DEPT.
- 4. EXISTING WATER MAIN AND HYDRANTS SHALL REMAIN IN SERVICE UNTIL ALL EXISTING SERVICES ARE CONNECTED TO NEW MAIN. FINAL CONNECTIONS OF NEW MAIN SHALL THEN BE PERFORMED AND EXISTING MAIN ABANDONED IN PLACE. ALL TIENS TO EXISTING MAINS SHALL BE COORDINATED WITH THE CITY WATER DEPT.
- 5. ALL EXISTING VALVES ON ABANDONED MAINS AND HYDRANT LEADS SHALL HAVE THE BOXES REMOVED TO 1' BELOW GRADE AND BE FILLED WITH L.S.M. COSTS FOR THIS WORK SHALL BE INCLUDED IN THE PRICE BID FOR NEW WATER MAIN. ALL ABANDONED EXISTING HYDRANTS SHALL BE REMOVED. REMOVAL COSTS SHALL BE INCLUDED IN PRICE BID FOR HYDRANT ASSEMBLES.
- 6. ALL EXCAVATION AND TRENCH PROTECTION COSTS SHALL BE INCLUDED IN THE PRICE BID FOR THE ITEM BEING EXCAVATED FOR REGARDLESS OF SOIL CONDITIONS.
- 7. ALL WATER MAIN SURVEY AND LAYOUT COSTS SHALL BE INCLUDED IN THE PRICE BID FOR NEW WATER MAIN.
- 8. ALL OPEN ENDS OF ABANDONED WATER MAIN SHALL BE CAPPED OR PLUGGED STAINLESS STEEL BOLTS ARE NOT REQUIRED FOR THIS ITEM.
- 9. WATER MAIN TIENS AFFECTING WATER CRITICAL BUSINESS SHALL BE DONE DURING NON BUSINESS HOURS. NIGHT TIME WORK MAY BE NECESSARY FOR MAJOR WATER LINE TIENS. FOR TRAFFIC OR CONTRACTOR CONSIDERATIONS, ANY ADDITIONAL COSTS FOR SUCH WORK SHALL BE INCLUDED IN THE PRICE BID FOR SUCH ITEM.
- 10. CONTRACTOR SHALL BE RESPONSIBLE FOR ALL NOTIFICATIONS TO RESIDENTS OR BUSINESS AFFECTED BY WATER SHUTDOWNS FOR MAIN TIENS OR FOR SERVICE CONNECTIONS. NOTICES SHALL BE DELIVERED 24 HOURS IN ADVANCE.

**STORM WATER & SANITARY NOTES**

**GENERAL NOTES**  
CUYAHOGA FALLS, CITY OF  
COUNTY OF SUMMIT

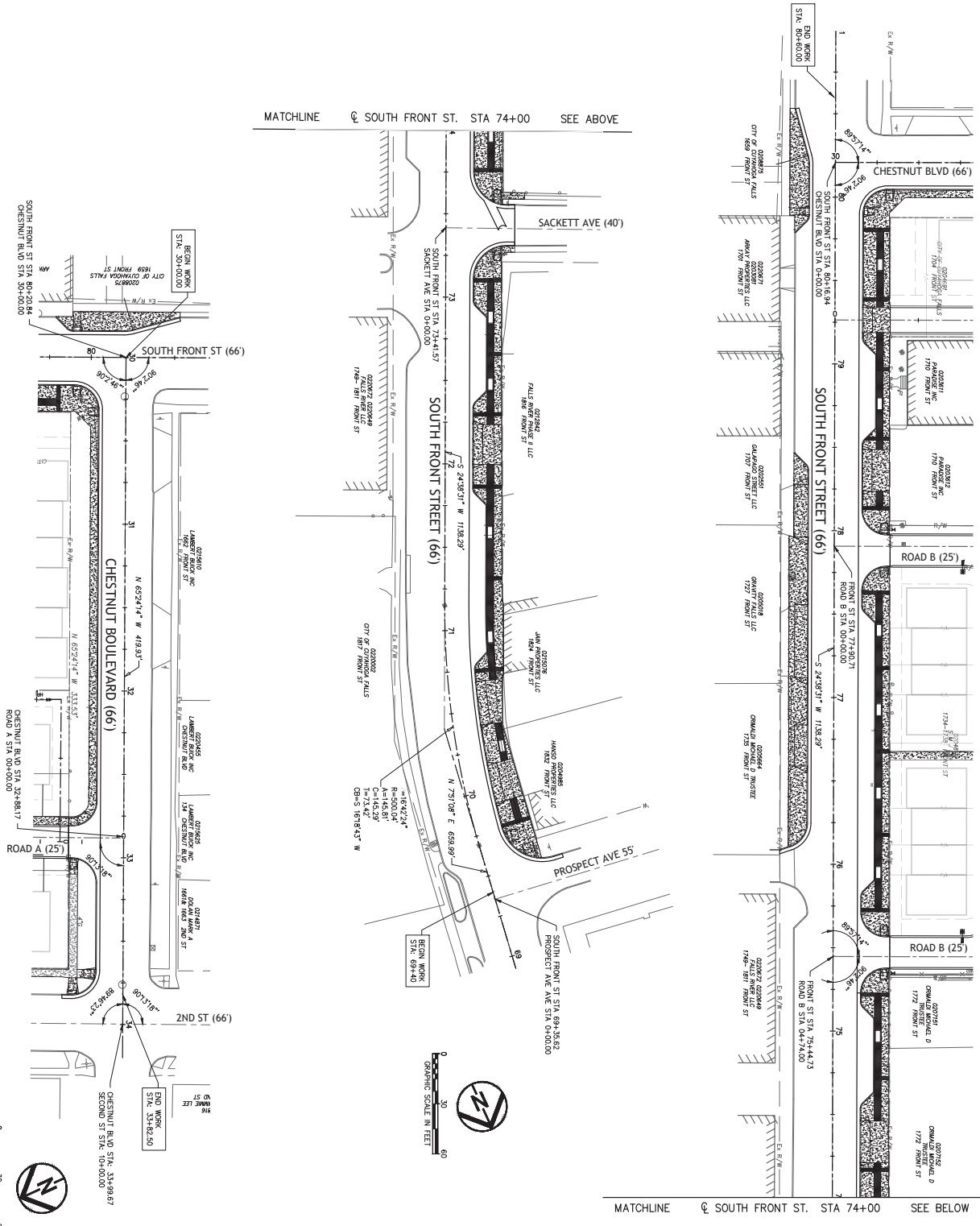
**CONSTRUCTION SET**

DATE:	
NO.	DATE

PROJECT NO.:	21-0025-010
DRAWN BY:	EDG
CHECKED BY:	SKB
DATE PLOTTED:	01/15/2020

**GENERAL NOTES**





DATE:	REVISIONS:
	NO. DATE DESCRIPTION
	1. 01/09/23
	2. 01/09/23
	3. 01/09/23
	4. 01/09/23
	5. 01/09/23
	6. 01/09/23
	7. 01/09/23
	8. 01/09/23
	9. 01/09/23
	10. 01/09/23
	11. 01/09/23
	12. 01/09/23
	13. 01/09/23
	14. 01/09/23
	15. 01/09/23
	16. 01/09/23
	17. 01/09/23
	18. 01/09/23
	19. 01/09/23
	20. 01/09/23
	21. 01/09/23
	22. 01/09/23
	23. 01/09/23
	24. 01/09/23
	25. 01/09/23
	26. 01/09/23
	27. 01/09/23
	28. 01/09/23
	29. 01/09/23
	30. 01/09/23
	31. 01/09/23
	32. 01/09/23
	33. 01/09/23
	34. 01/09/23
	35. 01/09/23
	36. 01/09/23
	37. 01/09/23
	38. 01/09/23
	39. 01/09/23
	40. 01/09/23
	41. 01/09/23
	42. 01/09/23
	43. 01/09/23
	44. 01/09/23
	45. 01/09/23
	46. 01/09/23
	47. 01/09/23
	48. 01/09/23
	49. 01/09/23
	50. 01/09/23

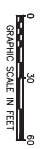
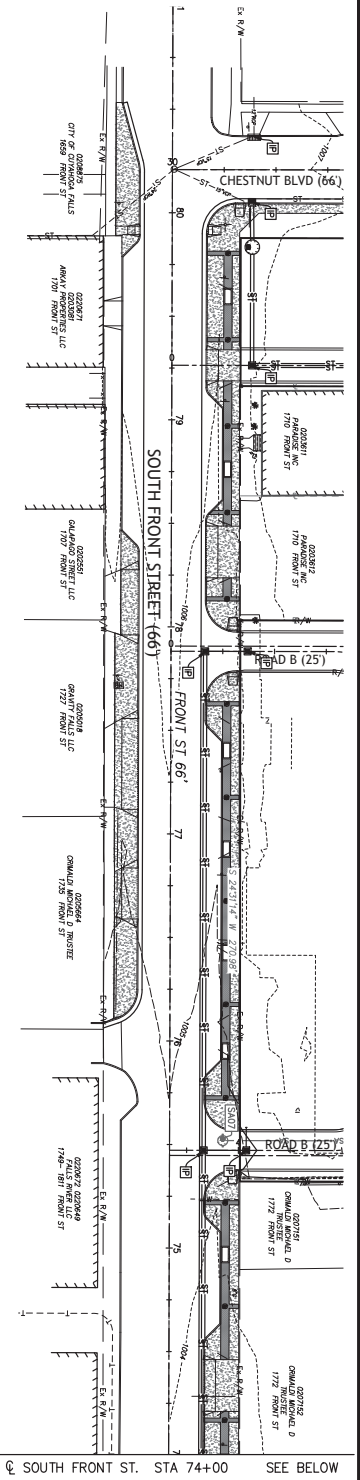
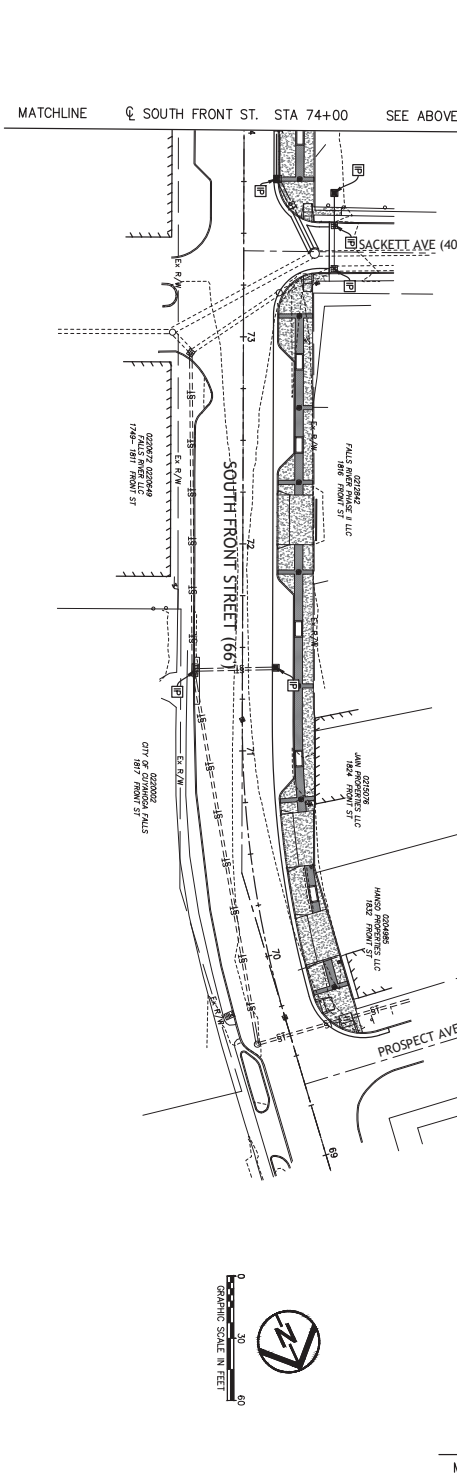
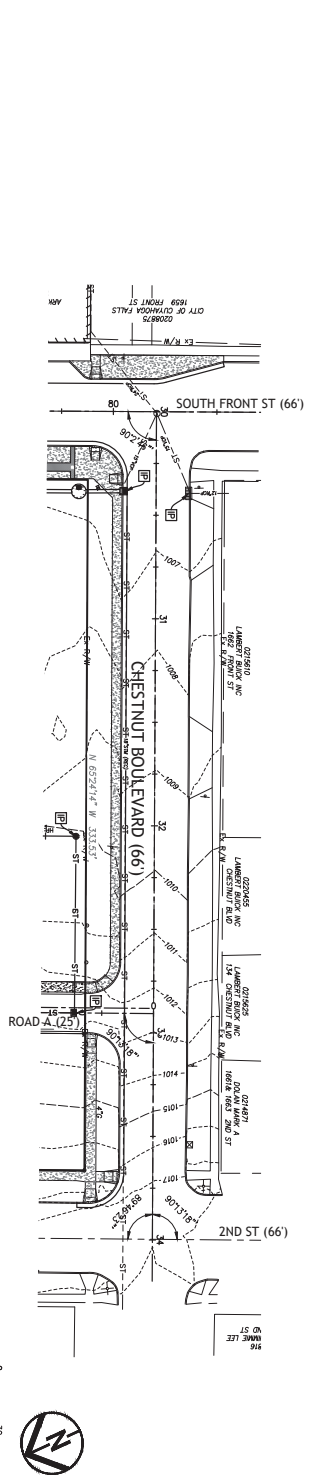
CONSTRUCTION SET

SOUTH FRONT STREET  
STREETSCAPE  
CUYAHOGA FALLS, CITY OF

5 OF 24

SCHMATIC PLAN

Environmental Design Group  
ARCHITECTURAL & LANDSCAPE ARCHITECTURE  
1727 SOUTH FRONT STREET  
CUYAHOGA FALLS, OHIO 44021



<b>6 OF 24</b> SWPP PLAN	<b>CONSTRUCTION SET</b>	<b>SOUTH FRONT STREET STREETSCAPE</b> CUYAHOGA FALLS, CITY OF	
	DATE: _____		
	REVISIONS	DATE	

**STORMWATER POLLUTION PREVENTION PLAN NOTES**

- CONSTRUCT IN ACCORDANCE WITH THESE PLANS. THE OHIO DEPARTMENT OF TRANSPORTATION (ODOT) STANDARD CONSTRUCTION DRAWING DM-4.4 AND THE OHIO RAINWATER AND LAND DEVELOPMENT HANDBOOK (2006), THE IMPLEMENTATION OF SOIL EROSION AND SEDIMENT CONTROL SHALL ALSO CONFORM TO THE REQUIREMENTS OF THE OHIO ENVIRONMENTAL PROTECTION AGENCY (EPA) UNDER NPDES PERMIT #OH0000005. IF CONFLICTS EXIST REGARDING THE SOIL AND SEDIMENT CONTROL PRACTICES, THE MORE RESTRICTIVE SHALL APPLY.
- STABILIZATION OF DISTURBED AREAS - DISTURBED AREAS SHALL HAVE SOIL STABILIZATION APPLIED WITHIN SEVEN (7) DAYS IF THEY ARE TO REMAIN DORMANT (UNDISTURBED) FOR MORE THAN FOURTEEN (14) DAYS. FOR AREAS WITHIN FIFTY (50) FEET OF ANY LIVE STREAM, SOIL STABILIZATION PRACTICES SHALL BE INITIATED WITHIN TWO (2) DAYS ON ALL INACTIVE, DISTURBED AREAS. PERMANENT OR TEMPORARY SOIL STABILIZATION SHALL BE APPLIED TO DISTURBED AREAS WITHIN SEVEN (7) DAYS AFTER FINAL GRADE IS REACHED ON ANY PORTION OF THE SITE. WHEN SEASONAL CONDITIONS PROHIBIT THE APPLICATION OF TEMPORARY OR PERMANENT SEEDING, NON-VEGETATIVE SOIL STABILIZATION PRACTICES SUCH AS MULCHING AND MATTING SHALL BE USED.
- INSTALL ALL EROSION/SEDIMENT CONTROL ITEMS BEFORE ANY CLEARING/GRUBBING OR EARTHWORK HAS STARTED.
- PROTECT UNDISTURBED AREAS THROUGHOUT CONSTRUCTION. DO NOT STORE EQUIPMENT, VEHICLES OR MATERIALS IN THESE PROTECTED AREAS.
- SEEDING AND FERTILIZER FOR PERMANENT COVER SHALL BE AS SPECIFIED IN ODOT CMS ITEM 659.
- MULCHING SHALL BE AS SPECIFIED IN ODOT CMS ITEM 659.
- TOPSOILING SHALL BE AS SPECIFIED IN ODOT CMS ITEM 659.
- EXCLOSOR MATTING/EROSION CONTROL BLANKETS WILL BE USED ON TEMPORARY DIVERSION CHANNELS AND DITCHES GREATER THAN 1.5% AND ALL OTHER SLOPES STEEPER THAN 6%. EXCLOSOR MATTING/EROSION BLANKETS SHALL BE AS SPECIFIED IN ODOT CMS ITEM 712.11.
- SILT FENCE AND/OR SILT SOCK SHALL BE AS DETAILED ON THE DRAWINGS AND AS SPECIFIED IN THE OHIO RAINWATER AND LAND DEVELOPMENT MANUAL.
- ROCK CHANNEL PROTECTION SHALL BE AS SPECIFIED IN ODOT CMS ITEM 601, TYPE C ROCK.
- NO SOLID OR LIQUID WASTE SHALL BE DISCHARGED INTO STORMWATER RUNOFF.
- OFF-SITE VEHICLE TRACKING OF SEDIMENTS WILL BE MINIMIZED. ALL OFF-SITE TRACKING OF SEDIMENT SHALL BE CLEANED UP AS IT OCCURS.
- SEDIMENT TRAPS AND BASINS WILL BE USED FOR TEMPORARY EROSION CONTROL.
- OTHER EROSION CONTROL AND SEDIMENT CONTROL ITEMS MAY BE NECESSARY DUE TO ENVIRONMENTAL CONDITIONS.
- A PRE-CONSTRUCTION MEETING IS REQUIRED WITH SUMMIT S.W.C.D. (330-929-2871) PRIOR TO BEGINNING WORK.
- TRUCK WASHOUT AND DISCHARGE OF SURPLUS WASH WATER ON SITE IS PERMITTED EXCLUSIVELY IN THE DESIGNATED AREA.
- WINTERIZATION - ANY DISTURBED AREA THAT IS NOT GOING TO BE WORKED FOR 14 DAYS OR MORE MUST BE SEEDED AND MULCHED BY NOVEMBER 1 OR MUST HAVE A DORMANT SEEDING OR MULCH COVER APPLIED BETWEEN NOVEMBER 1 AND MARCH 1.
- TRENCH WATER MUST BE PUMPED THROUGH A SEDIMENT SETTLING FACILITY OR EQUALLY EFFECTIVE DEVICE PRIOR TO DISCHARGE FROM THE SITE.
- STAGING, STORAGE, FUELING AND VEHICLE PARKING ARE SHOWN ON THE SWMP PLAN. IF THE CONTRACTOR WANTS TO UTILIZE A DIFFERENT LOCATION FOR THESE FUNCTIONS, HE SHALL REVISE THE SWMP PLAN AND SUBMIT IT TO SUMMIT S.W.C.D. FOR APPROVAL.
- THE CONTRACTOR IS RESPONSIBLE FOR ALL EROSION AND SEDIMENT CONTROL MEASURES.
- DISTURBED AREAS REMAINING DORMANT FOR OVER A YEAR AT THE FINAL GRADE WILL HAVE A PERMANENT COVER APPLIED WITHIN 7 DAYS OF LAST DISTURBANCE.

**MAINTENANCE AND INSPECTION:**  
PERMANENT RECORDS OF MAINTENANCE AND INSPECTION MUST BE MAINTAINED

THROUGHOUT CONSTRUCTION A MINIMUM OF ONCE EVERY 7 DAYS AND AFTER STORM EVENTS GREATER THAN 0.5 INCH IN A 24 HOUR PERIOD. PROVIDE NAME OF INSPECTOR, MAJOR OBSERVATIONS, DATE OF INSPECTION, CERTIFICATION OF COMPLIANCE AND CORRECTIVE MEASURES TAKEN.

**REPAIRS:**  
ANY EROSION CONTROL MEASURES, STRUCTURES, DEVICES, OR RELATED ITEMS IN NEED OF REPAIR WILL BE MADE WITHIN 7 DAYS.

**MATERIAL MANAGEMENT PRACTICES:**  
THE FOLLOWING PRACTICES SHALL BE EXECUTED TO REDUCE THE RISK OF SPILLS OR OTHER ACCIDENTAL EXPOSURE OF MATERIALS AND SUBSTANCES TO STORMWATER RUN-OFF. THE JOB SITE SUPERINTENDENT IS RESPONSIBLE FOR ENSURING THESE PRACTICES ARE FOLLOWED:

- STORE THE MINIMUM AMOUNT OF PRODUCT REQUIRED TO COMPLETE THE JOB. IF POSSIBLE, UNDER ROOF OR IN A CONTAINMENT AREA. PRODUCTS SHALL REMAIN IN THEIR ORIGINAL CONTAINER. LABEL MUST BE LEGIBLE.
- MANUFACTURER'S RECOMMENDATION SHALL BE FOLLOWED FOR USE AND DISPOSAL.
- PRODUCT TO BE USED ENTIRELY (WHEN POSSIBLE) PRIOR TO DISPOSING.
- MATERIAL SAFETY DATA SHEETS (MSDS) FOR EACH SUBSTANCE WITH HAZARDOUS PROPERTIES USED ON THE SITE SHALL BE OBTAINED AND POSTED IN THE IMMEDIATE AREA OF PRODUCT STORAGE AND SHALL BE USED FOR PROPER MANAGEMENT OF POTENTIAL WASTE.
- ALL HAZARDOUS WASTE MATERIAL WILL BE DISPOSED BY THE CONTRACTOR IN A MANNER SPECIFIED BY LOCAL, STATE OR FEDERAL REGULATIONS AND PER MANUFACTURER'S RECOMMENDATIONS.
- ALL PERSONNEL SHALL BE TRAINED IN THE PROPER HANDLING AND CLEAN UP OF SPILLED MATERIALS. NO SPILLED HAZARDOUS MATERIALS OR WASTE SHALL BE ALLOWED TO COME IN CONTACT WITH STORMWATER DISCHARGES. IF NECESSARY, THE CONTAMINATED STORMWATER WILL BE HELD ON SITE UNTIL IT MEETS LOCAL, STATE AND FEDERAL REGULATIONS.
- IN THE EVENT OF A SPILL THE FOLLOWING PROCEDURES MUST BE FOLLOWED:
  - ALL SPILLS SHALL BE CLEANED UP IMMEDIATELY AFTER DISCOVERY.
  - THE PROJECT MANAGER AND ENGINEER OF RECORD IMMEDIATELY NOTIFIED.
  - ANY SPILLS OF TOXIC OR HAZARDOUS MATERIALS MUST BE REPORTED TO THE APPROPRIATE LOCAL, STATE AND FEDERAL AGENCY. THE EPA NATIONAL RESPONSE CENTER (1-800-424-9800) MUST BE NOTIFIED WHEN A SPILL EXCEEDS THE REPORTABLE QUANTITY OF A SUBSTANCE. THE SUBSTANCES AND AMOUNTS ARE LOCATED IN FEDERAL REGULATIONS (40 CFR 110, 114 AND 302).
  - IF A SPILL EXCEEDS A REPORTABLE QUANTITY, THE SWMP PLAN MUST BE MODIFIED WITHIN 7 DAYS PROVIDING A DESCRIPTION, DATE AND INCIDENT OF THE RELEASE.
- THE MIXING OR STORAGE OF COMPOUNDS SUCH AS FERTILIZERS, LIME ASPHALT, SOAPS AND SOLVENTS USED IN CLEANING VEHICLES, WASHOUT OF CONCRETE, PAINT OR STUCCO, FORM RELEASE OILS, OR CURING COMPOUNDS SHALL BE AWAY FROM STORM WATER DRAINAGE WAYS.
- FUEL TANKS MUST HAVE SECONDARY CONTAINMENT IN THE EVENT OF A LEAK OR SPILL.
- OPEN BURNING ON SITE IS A PROHIBITED ACTIVITY.
- ALL CONSTRUCTION AND DEMOLITION DEBRIS (C&D) WASTE SHALL BE DISPOSED OF AT AN OHIO EPA APPROVED C&D LANDFILL AS REQUIRED BY OHIO REVISED CODE 3714 AND LOCAL REGULATIONS.

**PRODUCT SPECIFIC PRACTICES:**  
1. PETROLEUM - PETROLEUM PRODUCTS WILL BE STORED IN CLEARLY LABELED TIGHTLY SEALED CONTAINERS. ANY ON SITE PETROLEUM STORAGE TANKS WILL HAVE A CONTAINMENT STRUCTURE AROUND IT FOR POTENTIAL SPILLS. DRIP PANS SHALL BE PROVIDED FOR ALL DISPENSERS. MANUFACTURER'S RECOMMENDATIONS SHALL BE FOLLOWED WHEN ANY ASPHALT SUBSTANCES ARE USED ON SITE.

2. FERTILIZERS - THE MANUFACTURER'S RECOMMENDED MINIMAL AMOUNTS SHALL BE APPLIED AND WORKED INTO THE SOIL TO LIMIT THE EXPOSURE TO STORMWATER. THE CONTENTS OF ANY PARTIALLY USED BAGS WILL BE TRANSFERRED TO SEALABLE PLASTIC BINS AND STORED UNDER COVER, AWAY FROM STORMWATER DRAINAGE WAYS.

SITE LOCATION INFORMATION		LATITUDE:	41°07'43"N
CITY OF CUYAHOGA FALLS		LONGITUDE:	81°29'09"W
CITY, VILLAGE, TOWNSHIP		SUMMIT	OH
CUYAHOGA RIVER		COUNTY	STATE
NAME OF WATERSHED/IMMEDIATE RECEIVING WATER(S)			
1738 FRONT ST CUYAHOGA FALLS OH 44221			
SITE ADDRESS			
CITY OF CUYAHOGA FALLS		330-971-8180	
DEVELOPER		PHONE	
2310 2ND ST, CUYAHOGA FALLS, OH 44221			
DEVELOPER ADDRESS			
HYDROLOGIC SOIL GROUPS:			
MAP UNIT SYMBOL (SOIL TYPE), MAP UNIT NAME (SOIL DESCRIPTION) EUC - Elsworth-Urban land complex, 6 to 18 percent slopes Uf - Udorthents, sanitary landfill			

SCHEDULE OF MAJOR CONSTRUCTION OPERATIONS												
2022-2023												
	J	F	M	A	M	J	J	A	S	O	N	D
CLEARING/DEMOLITION									●	●		
ROUGH GRADING												
UTILITIES												
FINE GRADING												
PAVING	●	●	●	●	●	●	●	●	●	●	●	●
TOPSOIL AND SEEDING	●	●	●	●	●	●	●	●	●	●	●	●
LANDSCAPING	●	●	●	●	●	●	●	●	●	●	●	●
POST CONSTRUCTION BMP'S	●	●	●	●	●	●	●	●	●	●	●	●
TEMPORARY EROSION CONTROL	●	●	●	●	●	●	●	●	●	●	●	●

ACCEPTABLE EROSION CONTROL TIMETABLE												
	J	F	M	A	M	J	J	A	S	O	N	D
TEMPORARY SEEDING												
PERMANENT SEEDING												
LANDSCAPING												
MULCHING	●	●	●	●	●	●	●	●	●	●	●	●
MAINTENANCE	●	●	●	●	●	●	●	●	●	●	●	●



SOILS MAP



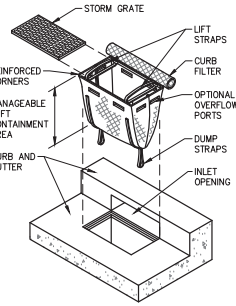
**SOUTH FRONT STREET**  
**STREETSCAPE**  
**CUYAHOGA FALLS, CITY OF**

**CONSTRUCTION SET**

DATE:	
REVISIONS	
Δ DATE DESCRIPTION	
PROJECT NO.:	21-00235-010
DRAWN BY:	EGC
CHECKED BY:	SRB
DATE ISSUED:	---

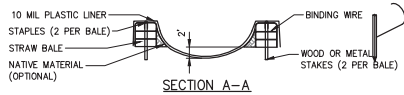
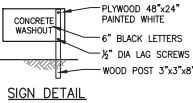
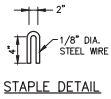
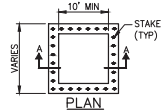
**SWPP NOTES**

- NOTES:**
1. REMOVE TRAPPED SEDIMENT WHEN BRIGHTLY COLORED EXPANSION RESTRAINT CAN NO LONGER BE SEEN.
  2. GEOTEXTILE SHALL BE A WOVEN POLYPROPYLENE FABRIC OR APPROVED EQUAL.
  3. PLACE AN OIL ABSORBENT PAD OR PILLOW OVER INLET GRATE WHEN OIL SPILLS ARE A CONCERN.
  4. INSPECT PER REGULATORY REQUIREMENTS.
  5. THE WIDTH AND LENGTH OF THE FILTER SACK SHALL MATCH THE INSIDE WIDTH AND LENGTH OF THE GRATED INLET BOX.
  6. THE DEPTH OF THE FILTER SACK SHALL BE BETWEEN 18" AND 36".



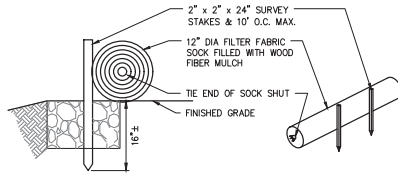
**1**  
**8** INLET PROTECTION - CURB SACK  
NOT TO SCALE

- NOTES:**
1. ACTUAL LAYOUT AND SIZE DETERMINED IN THE FIELD.
  2. THE CONCRETE WASHOUT SIGN SHALL BE INSTALLED WITHIN 30 FT OF THE TEMPORARY WASHOUT FACILITY.
  3. AS WASHOUT BECOMES FULL, IT SHALL BE REMOVED AND REPLACED.
  4. AFTER CONSTRUCTION COMPLETION, CONTRACTOR SHALL REMOVE AND DISPOSE OF CONCRETE WASHOUT AND SHALL RESTORE AREA AS SHOWN ON PLANS.

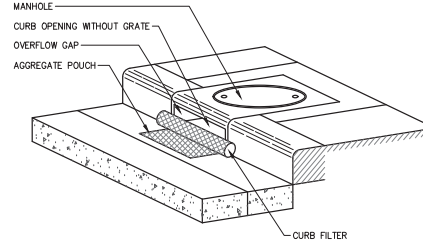


**5**  
**8** CONCRETE WASHOUT STATION  
NOT TO SCALE

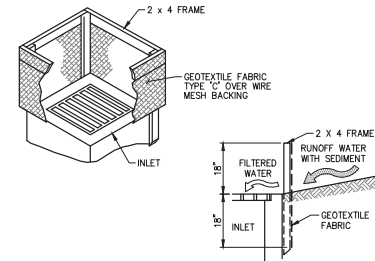
- NOTES:**
1. WATTLES SHALL BE PLACED IN A ROW WITH ENDS TIGHTLY ABUTTING
  2. EACH BALE SHALL BE PLACED ON PAVEMENT SURFACE. MAINTAIN EROSION CONTROL DEVICE UNTIL PLANTS ARE ESTABLISHED AND THE BIOSWALE SOIL MIX IS STABILIZED.
  3. WATTLES SHALL BE SECURELY ANCHORED IN PLACE BY TWO STAKES OR RE BARS DRIVEN THROUGH THE WATTLES. THE FIRST STAKE IN EACH BALE SHALL BE DRIVEN TOWARD THE PREVIOUSLY LAID BALE TO FORCE WATTLES TOGETHER.
  4. THE CONTRACTOR SHALL INSPECT THE DIKE AFTER EACH STORM, AND BE RESPONSIBLE FOR REPAIR OR REPLACEMENT OF SILT SOCK, BIOSWALE SOIL MIX AND PLANTINGS. REPAIRS SHALL BE MADE PROMPTLY AS NEEDED.
  5. WATTLES SHALL BE REMOVED WHEN THEY HAVE SERVED THEIR PURPOSE SO AS NOT TO BLOCK OR IMPEDE STORM FLOW OR DRAINAGE.



**2**  
**8** SILT SOCK  
NOT TO SCALE



**3**  
**8** INLET PROTECTION - CURB FILTER  
NOT TO SCALE



- NOTES:**
1. THIS METHOD OF INLET PROTECTION IS APPLICABLE WHERE THE INLET DRAINS A RELATIVELY FLAT AREA (SLOPES NO GREATER THAN 5 PERCENT) WHERE SHEET OR OVER- LAND FLOWS (NOT EXCEEDING 0.5 CFS) ARE TYPICAL.
  2. THIS INLET PROTECTION TO BE USED IN DITCHES. FOR CURB STYLE INLETS, USE "DANDY BAG" OR APPROVED EQUAL.

**4**  
**8** INLET PROTECTION - SILT FENCE  
NOT TO SCALE

DATE: \_\_\_\_\_

REVISIONS	DATE	DESCRIPTION

PROJECT NO.: 21-00525-010  
DRAWN BY: EDC  
CHECKED BY: SRB  
DATE ISSUED: ---

C:\PROJECTS\2021\21-00525\21-00525-010\21-00525-010-010.DWG (11/18/2021 10:30:34 AM)

TYPICAL SECTION LEGEND

- ① ITEM 202 - PAVEMENT REMOVED
- ② ITEM 202 - WALK REMOVED, AS PER PLAN
- ③ ITEM 202 - CURB REMOVED, AS PER PLAN
- ④ ITEM 203 - EXCAVATION AND EMBANKMENT (SEE NOTE 5)
- ⑤ ITEM 204 - SUBGRADE COMPACTION
- ⑥ ITEM 254 - PAVEMENT FINISH, 0" TO 1.5"
- ⑦ ITEM 301 - 8" ASPHALT CONCRETE BASE, PG64+22
- ⑧ ITEM 304 - 4" AGGREGATE BASE
- ⑨ ITEM 304 - 6" AGGREGATE BASE
- ⑩ ITEM 304 - FILL VOID FROM BOTTOM OF EXISTING PAVEMENT SUBGRADE WITH AGGREGATE BASE. THICKNESS VARIES
- ⑪ ITEM 407 - TACK COAT
- ⑫ ITEM 408 - PRIME COAT (0.4 GAL/SY)
- ⑬ ITEM 441 - 1.5" ASPHALT CONCRETE SURFACE COURSE, TYPE 1, PG 64+22, (449)
- ⑭ ITEM 441 - 1.5" ASPHALT CONCRETE INTERMEDIATE COURSE, TYPE 2, PG 64+22, (449)
- ⑮ ITEM 605 - 4" PIPE UNDERDRAIN
- ⑯ ITEM 608 - 4" CONCRETE WALK (SEE NOTE 5)
- ⑰ ITEM 609 - VERTICAL CONCRETE CURB, 4" REVEAL
- ⑱ ITEM 652 - 4" SCREENED TOPSOIL
- ⑲ ITEM 659 - SEEDING AND MULCHING, AS PER PLAN

(A) EXISTING PAVEMENT, THICKNESS UNVERIFIED (SEE NOTE 4)

(B) EXISTING AGGREGATE BASE, 6" +/-

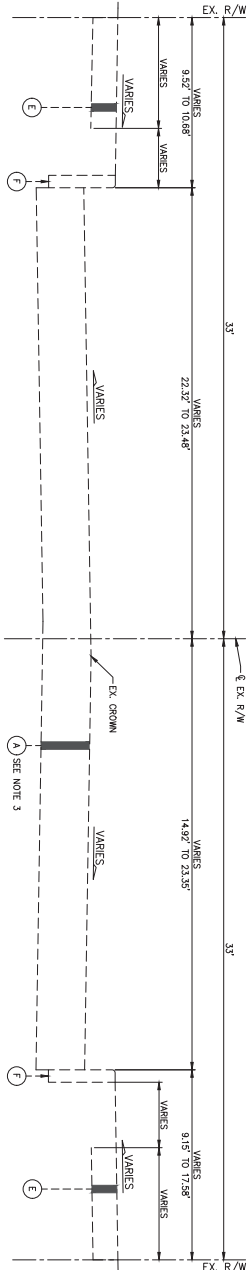
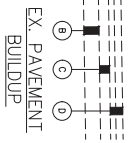
(C) EXISTING ASPHALT CONCRETE BASE, 9" +/-

(D) EXISTING ASPHALT, 2-3/4" +/-

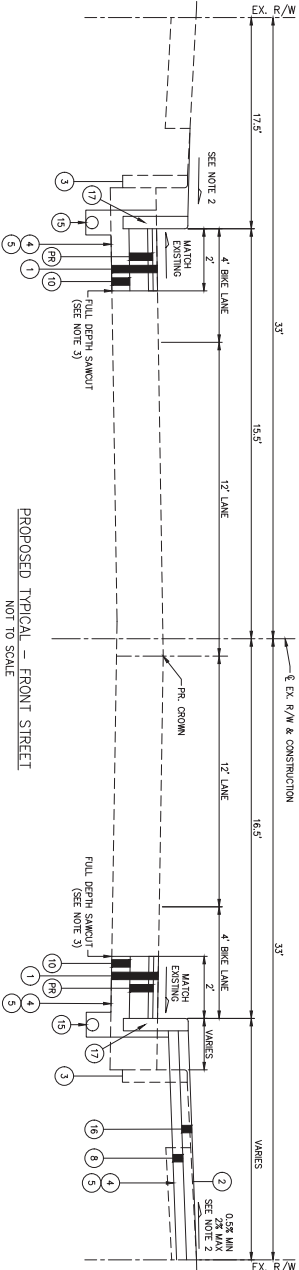
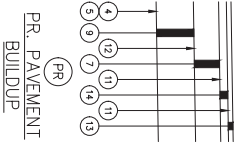
(E) EXISTING WALK

(F) EXISTING CURB

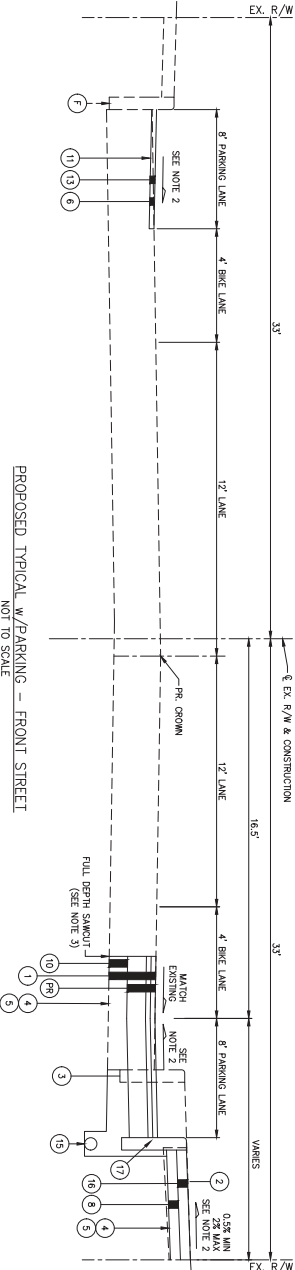
- NOTES:
1. THE STATIONING OF FRONT STREET IS INCREASING FROM NORTH TO SOUTH.
  2. GROSS SLOPE VARIES. SEE GRADING AND LAYOUT PLAN, SHEETS 17-18, FOR ELEVATIONS.
  3. COST FOR SAMCUTTING SHALL BE INCLUDED IN THE BID PRICE FOR PAVEMENT REMOVAL.
  4. CONTRACTOR SHALL VERIFY PAVEMENT BUILDUP PRIOR TO MOBILIZING EQUIPMENT NECESSARY TO COMPLETE THE WORK INCLUDED IN THIS PROJECT.
  5. COST FOR EXCAVATION AND EMBANKMENT SHALL BE INCLUDED IN THE BID PRICE FOR THE OTHER ITEMS NECESSITATING THE WORK.
  6. CONCRETE WALK AT DRIVENWAYS SHALL BE 6" THICK.
  7. PROPOSED PAVEMENT BEYOND LIMITS OF WALK SHALL MATCH EXISTING ASPHALT PAVEMENT BEYOND LIMITS OF WALK. PROPOSED AGGREGATE BASE SHALL BE 4" THICK AND SHALL BE GENERATED USING THE PROPOSED ROADWAY PAVEMENT SLOPE. THE NEW PAVEMENT AS REQUIRED FROM BACK OF WALK ELEVATION TO THE EXISTING PAVEMENT.
  8. IN LOCATIONS WHERE NO WORK IS DENOTED BEYOND THE EXISTING R/W LIMITS, WORK SHALL BE LIMITED TO THE EXISTING PAVEMENT/WALK SHALL BE MAINTAINED AT THE EXISTING R/W LINE AND PROPOSED WORK SHALL MEET THE EXISTING PAVEMENT OR WALK TO REMAIN.



EXISTING SECTION - FRONT STREET  
STA 80+58.00 TO STA 69+00.00  
NOT TO SCALE



PROPOSED TYPICAL - FRONT STREET  
NOT TO SCALE



PROPOSED TYPICAL w/PARKING - FRONT STREET  
NOT TO SCALE



SOUTH FRONT STREET  
STREETSCAPE  
CUYAHOGA FALLS, CITY OF

CONSTRUCTION SET

DATE: \_\_\_\_\_

NO.	DATE	DESCRIPTION

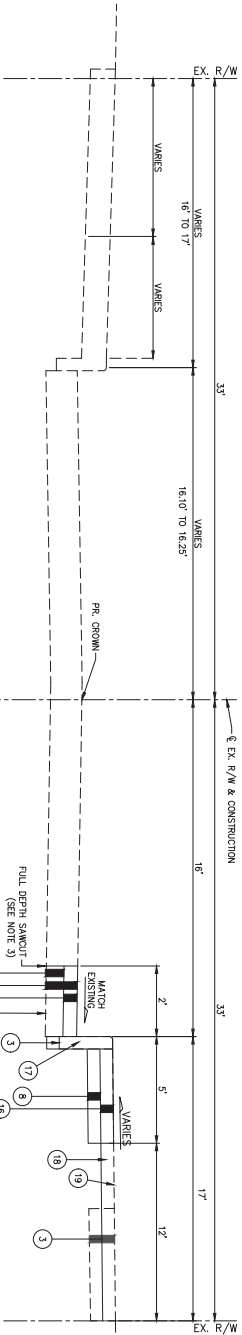
TYPICAL SECTIONS  
9 OF 24

**TYPICAL SECTION LEGEND**

- 1 ITEM 202 - PAVEMENT REMOVED
- 2 ITEM 202 - WALK REMOVED, AS PER PLAN
- 3 ITEM 202 - CURB REMOVED, AS PER PLAN
- 4 ITEM 203 - EXCAVATION AND EMBANKMENT (SEE NOTE 5)
- 5 ITEM 204 - SUBGRADE COMPACTION
- 6 ITEM 234 - PAVEMENT PLANING, 0" TO 1.5"
- 7 ITEM 301 - 6" ASPHALT CONCRETE BASE; PG64-22
- 8 ITEM 304 - 4" AGGREGATE BASE
- 9 ITEM 304 - 6" AGGREGATE BASE
- 10 ITEM 304 - FILL VOID FROM BOTTOM OF EXISTING PAVEMENT SUBGRADE WITH AGGREGATE BASE; THICKNESS VARIES
- 11 ITEM 407 - TACK COAT
- 12 ITEM 408 - PRIME COAT (0.4 GAL/SY)
- 13 ITEM 441 - 1.5" ASPHALT CONCRETE, TYPE 1, PG 64-22, (449)
- 14 ITEM 441 - 1.5" ASPHALT CONCRETE INTERMEDIATE COURSE, TYPE 2, PG 64-22, (449)
- 15 ITEM 605 - 4" PIPE UNDERDRAIN
- 16 ITEM 608 - 4" CONCRETE WALK (SEE NOTE 6)
- 17 ITEM 609 - VERTICAL CONCRETE CURB, 6" REVEAL
- 18 ITEM 652 - 4" SCREENED TOPSOIL
- 19 ITEM 659 - SEEDING AND MULCHING, AS PER PLAN



PR. PAVEMENT BUILDUP



EXISTING SECTION - CHESTNUT BOULEVARD  
STA 00+00 TO STA 04+00.00  
NOT TO SCALE

PROPOSED SECTION - CHESTNUT BOULEVARD  
STA 00+00 TO STA 04+00  
NOT TO SCALE

- NOTES:**
1. THE STATIONING OF CHESTNUT BOULEVARD IS INCREASING FROM EAST TO WEST.
  2. GROSS SLOPE VARIES. SEE GRADING AND LAYOUT PLAN, SHEETS 17-18, FOR ELEVATIONS.
  3. COST FOR SAMCUTTING SHALL BE INCLUDED IN THE BID PRICE FOR PAVEMENT REMOVAL.
  4. CONTRACTOR SHALL VERIFY PAVEMENT BUILDUP PRIOR TO MOBILIZING EQUIPMENT NECESSARY TO COMPLETE THE WORK INCLUDED IN THIS PROJECT.
  5. COST FOR EXCAVATION AND EMBANKMENT SHALL BE INCLUDED IN THE BID PRICE FOR THE OTHER ITEMS NECESSITATING THE WORK.
  6. CONCRETE WALK AT DRIVEWAYS SHALL BE 6" THICK.
  7. PROPOSED PAVEMENT BEYOND LIMITS OF WALK SHALL MATCH EXISTING ASPHALT PAVEMENT MATERIAL AND FINISH. EXISTING PAVEMENT SHALL BE SHOWN AT THE EXISTING R/W LINE AND PROPOSED WORK SHALL MEET THE EXISTING PAVEMENT OR WALK TO REMAIN.
  8. IN LOCATIONS WHERE NO WORK IS DETICTED BEYOND THE EXISTING R/W LIMITS, WORK SHALL AND AT THE EX. R/W LINE. EXISTING PAVEMENT SHALL BE SHOWN AT THE EXISTING R/W LINE AND PROPOSED WORK SHALL MEET THE EXISTING PAVEMENT OR WALK TO REMAIN.



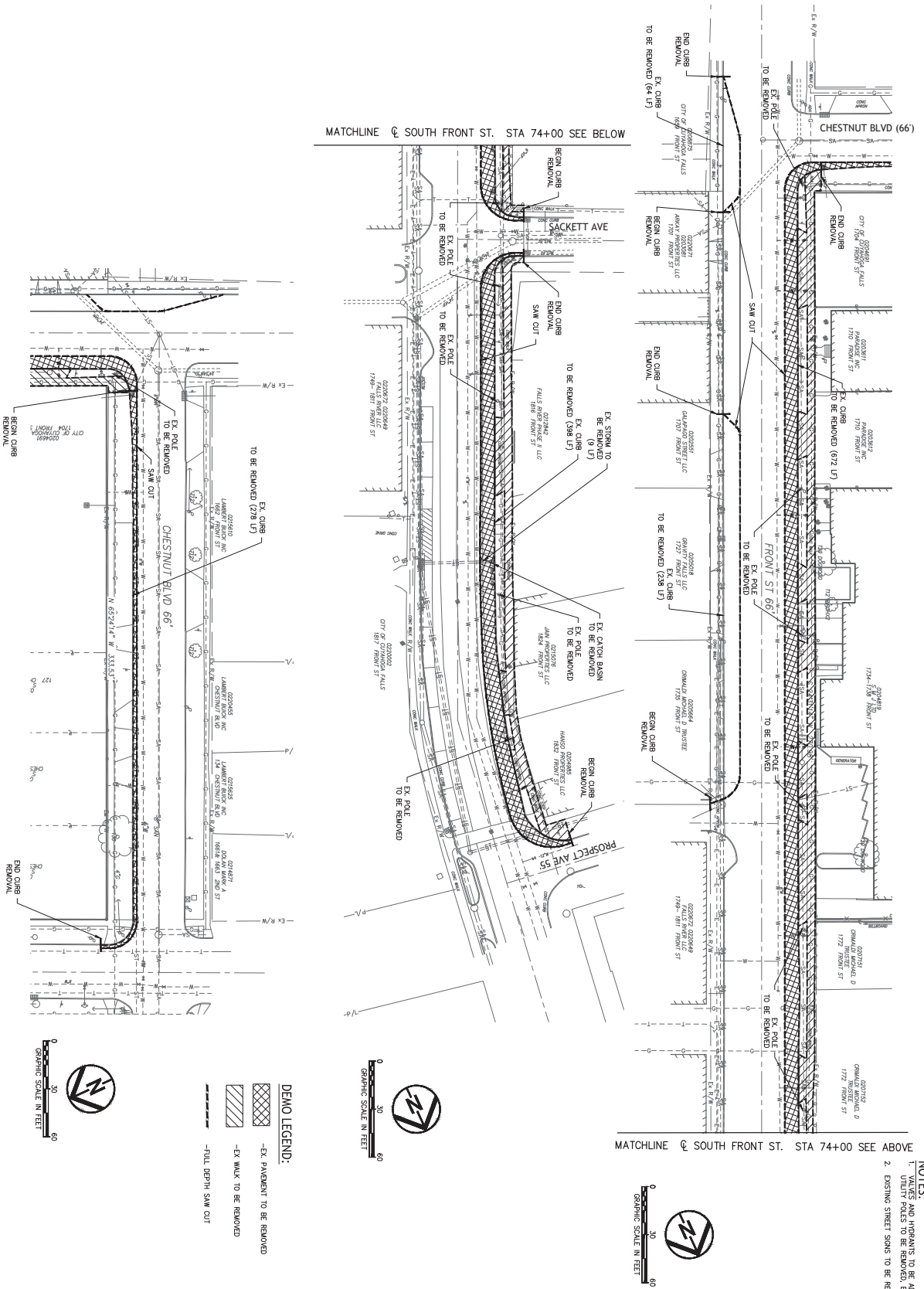
**SOUTH FRONT STREET  
STREETSCAPE  
CUYAHOGA FALLS, CITY OF**

**CONSTRUCTION SET**

REVISIONS	
NO.	DESCRIPTION

**10 OF 24**





- NOTES:**
1. ALL DIMENSIONS TO BE ADJUSTED TO GRADE.
  2. EXISTING STREET SIGNS TO BE REMOVED & REUSED.

**CONSTRUCTION SET**

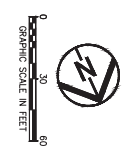
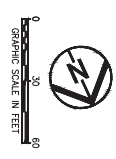
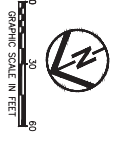
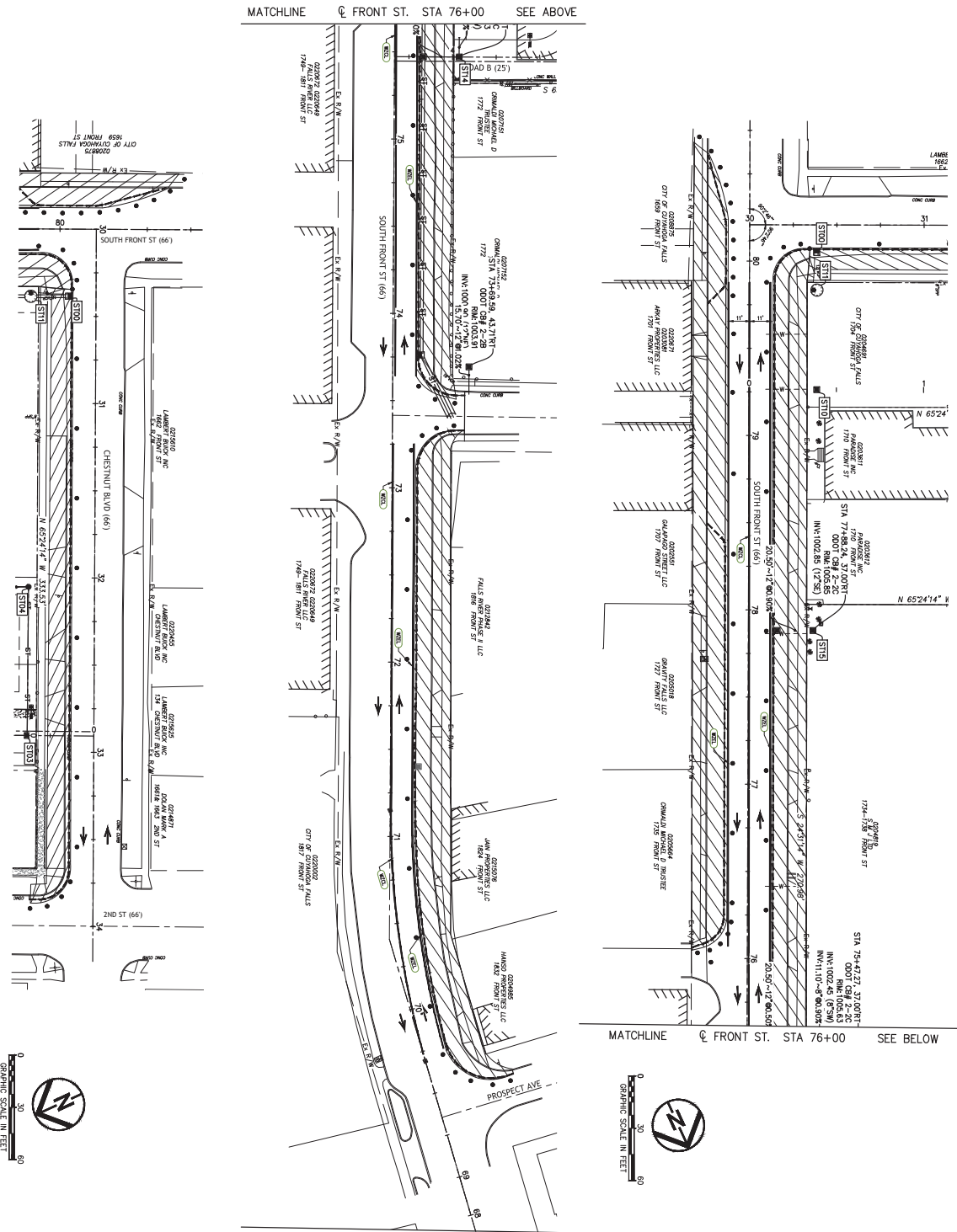
**SOUTH FRONT STREET STREETScape**  
CUYAHOGA FALLS, CITY OF

NO.	DATE	DESCRIPTION
1		ISSUED FOR PERMIT
2		ISSUED FOR CONSTRUCTION
3		ISSUED FOR AS-BUILT
4		ISSUED FOR RECORD
5		ISSUED FOR ARCHIVE

DATE: 01/09/2023  
 PROJECT NO: 21-0925-00  
 DRAWN BY: GSK  
 CHECKED BY: SKB  
 DATE PLOTTED: 01/09/2023

**DEMOLITION PLAN**






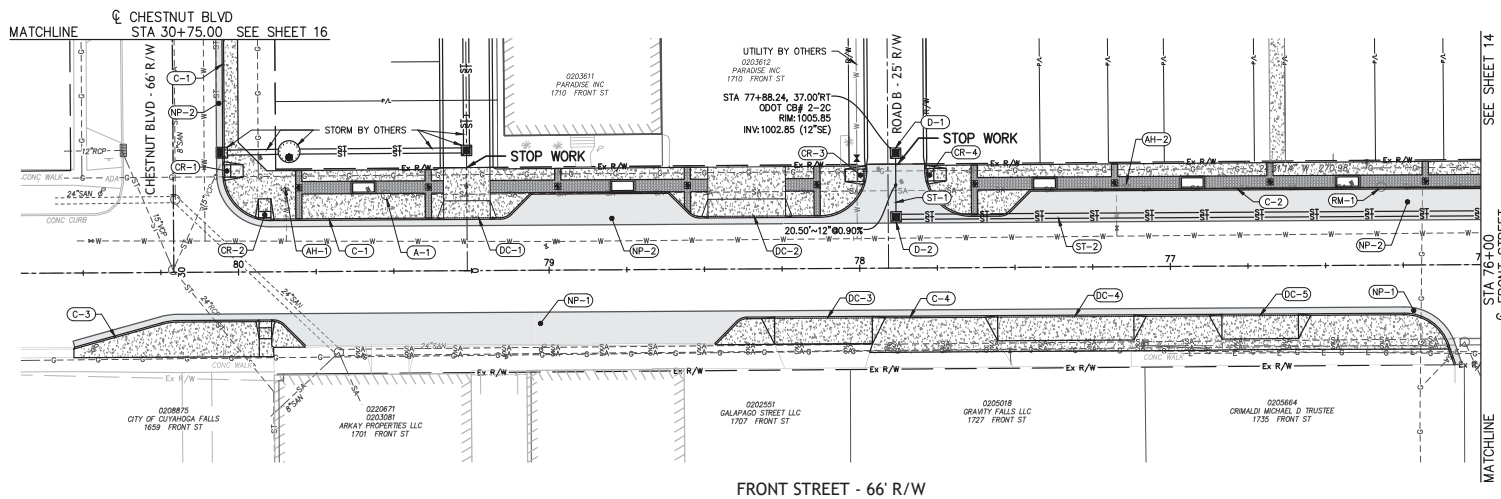
- NOTES:**
- MINIMUM TAPER RATE IS 5:25; REFER TO CONSTRUCTION NOTES ON THE GENERAL NOTES SHEET.
  - REFER TO PARTS AND NOT TRAFFIC STOPPING CONSTRUCTION DRAWINGS FOR ADVANCE WORK ZONE SIGNALING FOR SOUTH FRONT STREET AND SIDE STREETS.
- LEGEND**
- WORK AREA CENTER LINE (DOUBLE SOLID)
  - WORK ZONE EDGE LINE (WHITE)
  - WORK ZONE STOP LINE (WHITE)
  - WORK AREA, THIS PHASE (HATCHED AREA)
  - DIRECTION OF TRAVEL (ARROW USE, SHOW FOR CLARITY)
  - DRUMS (40" SPACING ON TANGENTS, 25" SPACING ON TAPERS, 10" SPACING FOR CHANNELING TWO-WAY TRAFFIC)

DATE:	
REVISIONS	DATE DESCRIPTION
1	
2	
3	
4	
5	
6	
7	
8	
9	
10	
PROJECT NO.:	21-00252-003
DRAWN BY:	GGG
CHECKED BY:	SRB
DATE PLOTTED:	01/05/2022

**SOUTH FRONT STREET STREETSCAPE**  
CUYAHOGA FALLS, CITY OF


  
**Environmental Design Group**  
 1800 WEST 10TH AVENUE, SUITE 200  
 CUYAHOGA FALLS, OHIO 44015  
 PHONE: (440) 326-9900  
 FAX: (440) 326-9901  
 WWW.ENVIRONMENTALDESIGNGROUP.COM

**SOUTH FRONT STREET  
 STREETSCAPE**  
 CUYAHOGA FALLS, CITY OF

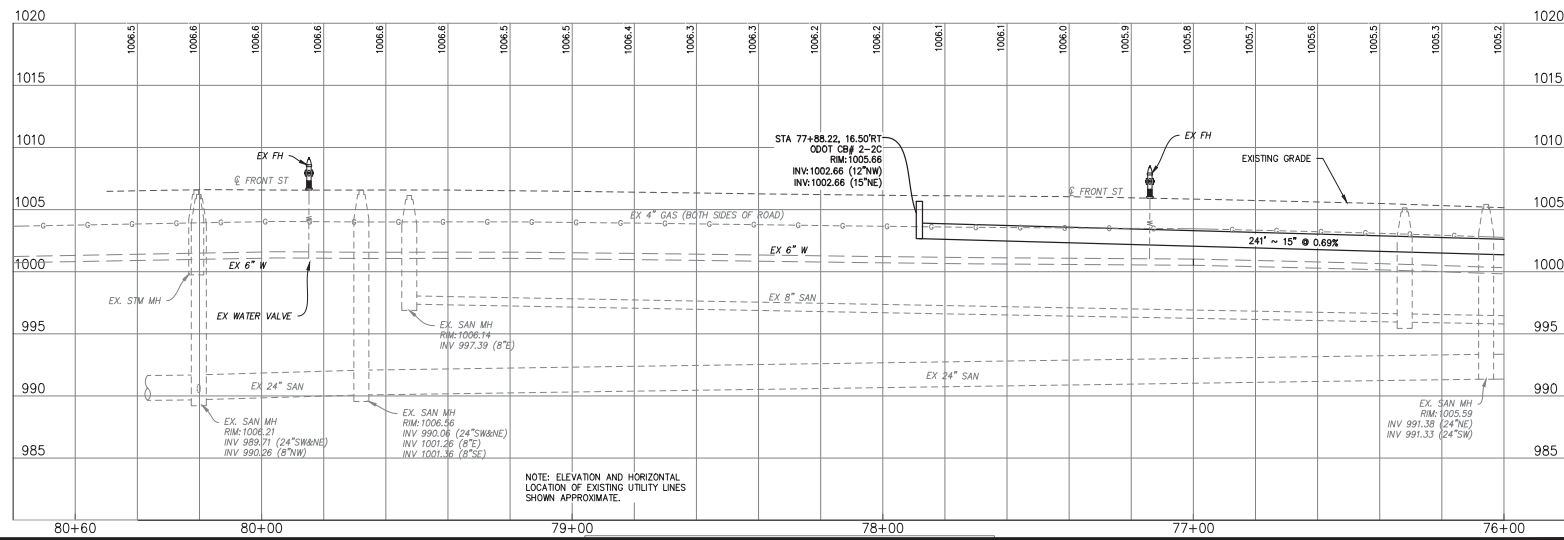
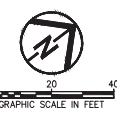


**KEYNOTES / LEGEND**

- C-1** PROPOSED CONCRETE CURB
- D-1** PROPOSED DRAINAGE STRUCTURE
- ST-1** PROPOSED STORM SEWER PIPE
- A-1** ADJUST TO GRADE AND REPLACE CASTING
- AH-1** ADJUST HYDRANT AND VALVE TO GRADE
- DC-1** PROPOSED DROP CURB
- RM-1** RECONSTRUCT EXISTING MANHOLE FRAME AND GRATE OUTSIDE OF PROPOSED CURB
- NP-1** NEW PAVEMENT
- CR-1** PROPOSED CURB RAMP

**NOTES**

1. THE STATIONING OF THE ROADWAY IS INCREASING FROM NORTH TO SOUTH. RIGHT OFFSETS DEPICT THE WEST SIDE OF THE RIGHT OF WAY AND LEFT OFFSETS DEPICT THE EAST SIDE OF THE RIGHT OF WAY.
2. REFER TO THE GLENS TOWN HOMES SITE PLANS FOR PROPOSED WORK OUTSIDE THE WEST RIGHT-OF-WAY.
3. SEE SHEET 21 FOR STREETSCAPE ITEMS (PLANTERS, LIGHT POLES, DECORATIVE PAVERS, ETC.) BETWEEN THE FACE OF THE CURB AND WEST RIGHT-OF-WAY.



NOTE: ELEVATION AND HORIZONTAL LOCATION OF EXISTING UTILITY LINES SHOWN APPROXIMATE.

**CONSTRUCTION SET**

DATE: \_\_\_\_\_

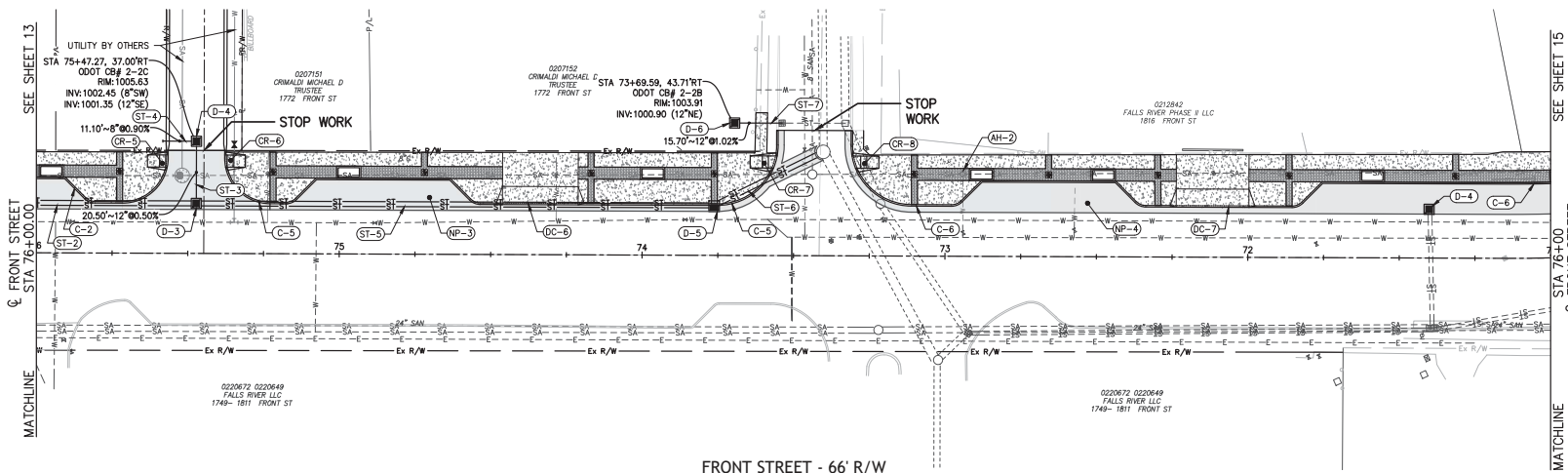
REVISIONS	
DATE	DESCRIPTION

PROJECT NO.: 21-0025-010  
 DRAWN BY: EGC  
 CHECKED BY: SRB  
 DATE ISSUED: ---

**PLAN & PROFILE  
 FRONT STREET  
 STA 81+00 - 76+00**

**SOUTH FRONT STREET  
 STREETScape**  
 CUYAHOGA FALLS, CITY OF

**CONSTRUCTION SET**



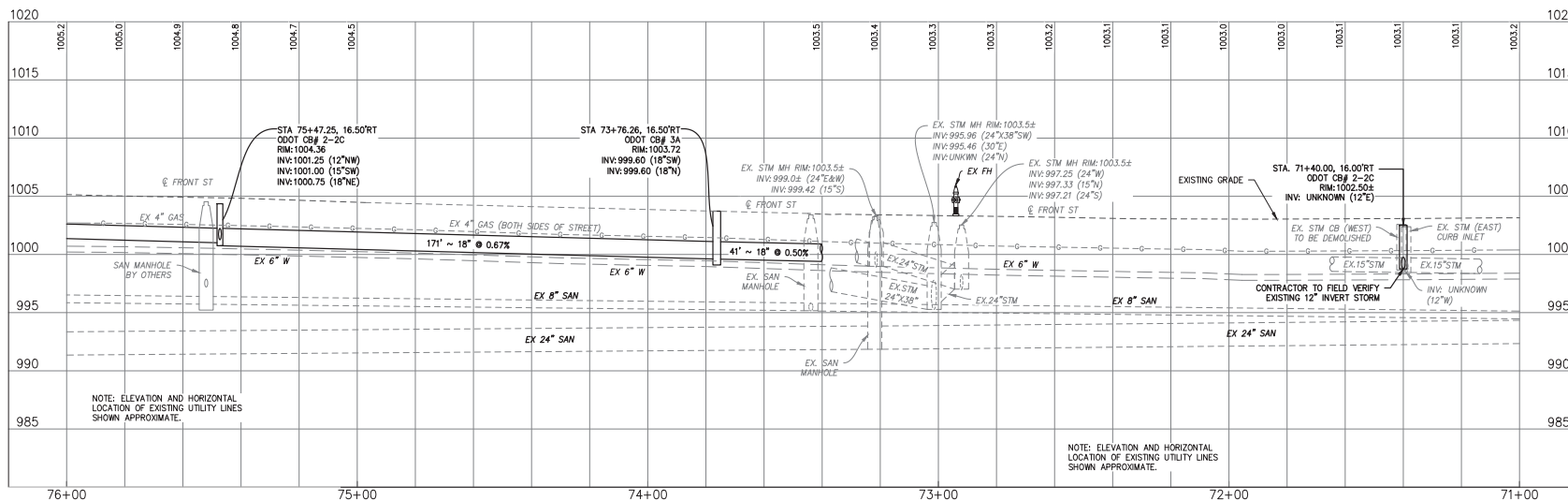
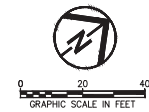
FRONT STREET - 66' R/W

**KEYNOTES / LEGEND**

- (C-2) PROPOSED CONCRETE CURB.
- (D-3) PROPOSED DRAINAGE STRUCTURE.
- (ST-2) PROPOSED STORM SEWER PIPE
- (A-2) ADJUST TO GRADE AND REPLACE CASTING.
- (AH-2) ADJUST HYDRANT AND VALVE TO GRADE.
- (C-3) PROPOSED DROP CURB.
- (RM-3) RECONSTRUCT EXISTING MANHOLE FRAME AND GRATE OUTSIDE OF PROPOSED CURB.
- (NP-3) NEW PAVEMENT
- (CR-3) PROPOSED CURB RAMP

**NOTES**

- THE STATIONING OF THE ROADWAY IS INCREASING FROM NORTH TO SOUTH. RIGHT OFFSETS DEPICT THE WEST SIDE OF THE RIGHT OF WAY AND LEFT OFFSETS DEPICT THE EAST SIDE OF THE RIGHT OF WAY.
- REFER TO THE GLENS TOWN HOMES SITE PLANS FOR PROPOSED WORK OUTSIDE THE WEST RIGHT-OF-WAY.
- SEE SHEET 21 FOR STREETScape ITEMS (PLANTERS, LIGHT POLES, DECORATIVE PAVERS, ETC.) BETWEEN THE FACE OF THE CURB AND WEST RIGHT-OF-WAY.

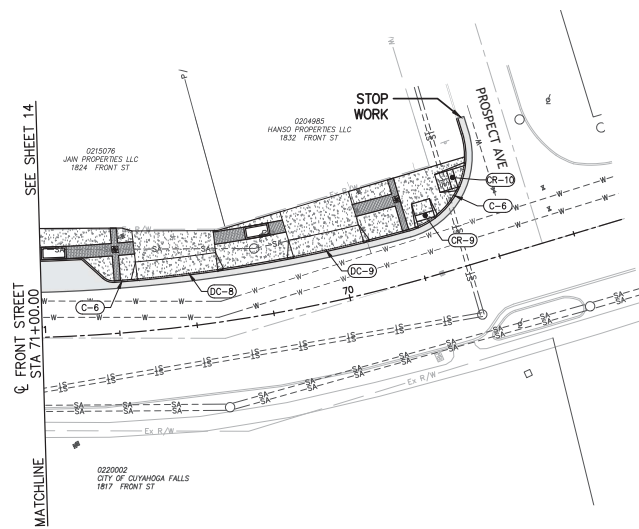


DATE: \_\_\_\_\_

REVISIONS	
DATE	DESCRIPTION

PROJECT NO.: 21-00525-010  
 DRAWN BY: EDC  
 CHECKED BY: SRB  
 DATE ISSUED: ---

PLAN & PROFILE  
 FRONT STREET  
 STA 76+00 - 71+00



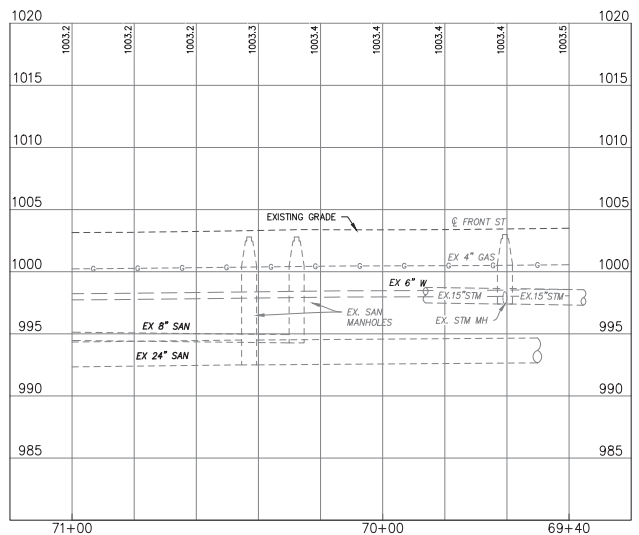
FRONT STREET - 66' R/W

**KEYNOTES / LEGEND**

- (C-1) PROPOSED CONCRETE CURB.
- (D-1) PROPOSED DRAINAGE STRUCTURE.
- (ST-1) PROPOSED STORM SEWER PIPE.
- (A-1) ADJUST TO GRADE AND REPLACE CASTING.
- (AH-1) ADJUST HYDRANT AND VALVE TO GRADE.
- (GC-1) PROPOSED DROP CURB.
- (RM-1) RECONSTRUCT EXISTING MANHOLE FRAME AND GRATE OUTSIDE OF PROPOSED CURB.
- (NP-1) NEW PAVEMENT.
- (CR-1) PROPOSED CURB RAMP.

**NOTES**

1. THE STATIONING OF THE ROADWAY IS INCREASING FROM NORTH TO SOUTH. RIGHT OFFSETS DEPICT THE WEST SIDE OF THE RIGHT OF WAY AND LEFT OFFSETS DEPICT THE EAST SIDE OF THE RIGHT OF WAY.
2. REFER TO THE GLENS TOWN HOMES SITE PLANS FOR PROPOSED WORK OUTSIDE THE WEST RIGHT-OF-WAY.
3. SEE SHEET 21 FOR STREETSCAPE ITEMS (PLANTERS, LIGHT POLES, DECORATIVE PAVERS, ETC.) BETWEEN THE FACE OF THE CURB AND WEST RIGHT-OF-WAY.



**SOUTH FRONT STREET  
 STREETSCAPE**  
 CUYAHOGA FALLS, CITY OF

**CONSTRUCTION SET**

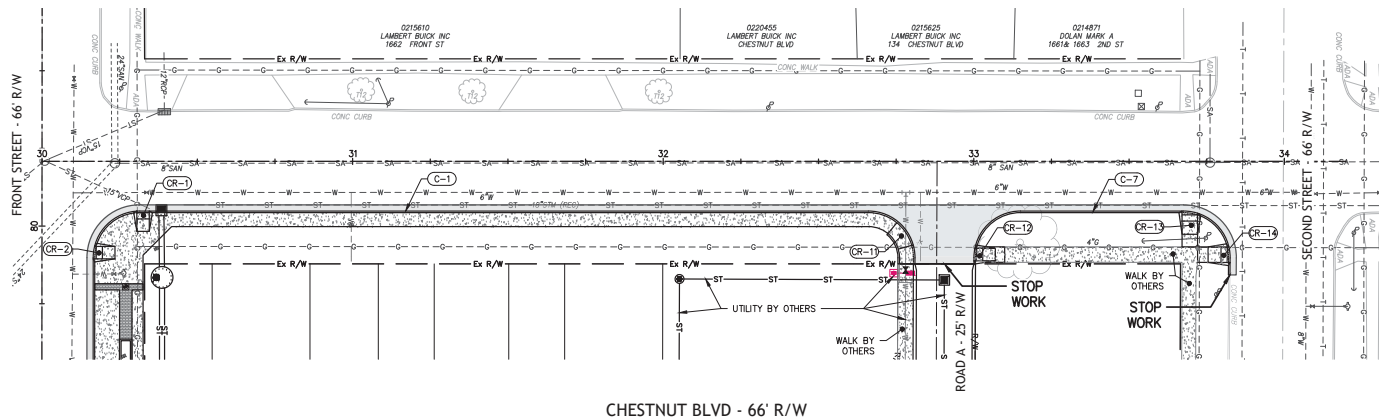
DATE: \_\_\_\_\_

REVISIONS	
DATE	DESCRIPTION

PROJECT NO.: 21-00225-010  
 DRAWN BY: EDC  
 CHECKED BY: SRB  
 DATE ISSUED: ---

**PLAN & PROFILE  
 FRONT STREET  
 STA 71+00 - 70+00**

C:\JANAKAS\FALLS\_CITY\_CEDS\15 SOUTH FRONT STREET STREETSCAPE IMPROVEMENTS.DWG, 10/18/2023 10:35:29 AM



CHESTNUT BLVD - 66' R/W

**SOUTH FRONT STREET  
 STREETSCAPE**  
 CUYAHOGA FALLS, CITY OF

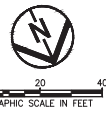
**CONSTRUCTION SET**

DATE: \_\_\_\_\_

REVISIONS	
DATE	DESCRIPTION

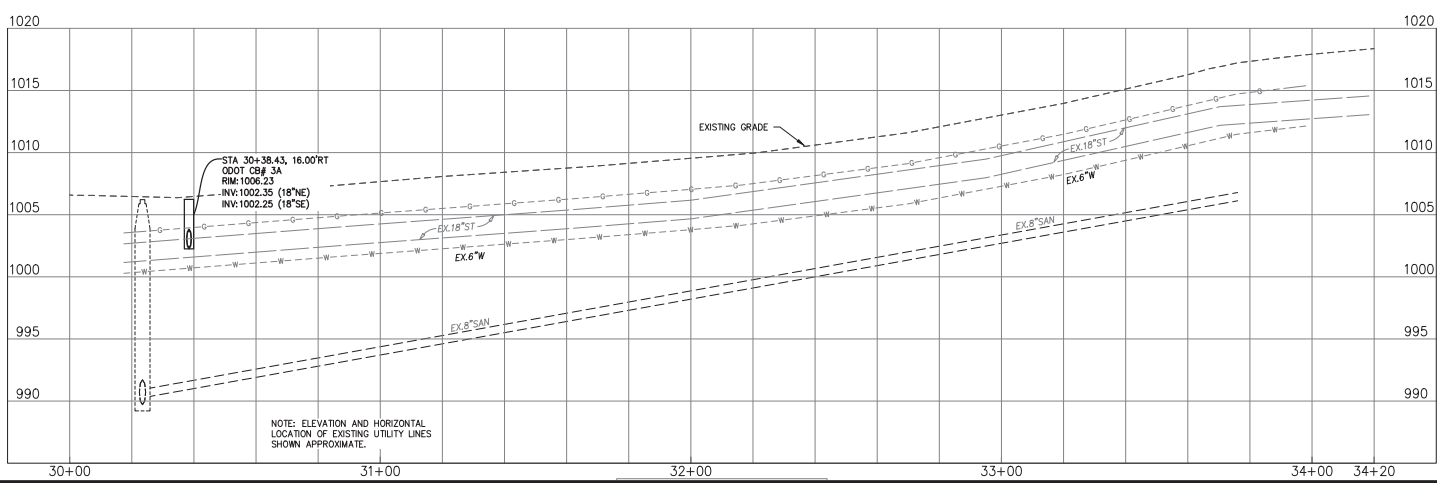
PROJECT NO.: 21-00225-010  
 DRAWN BY: EDC  
 CHECKED BY: SRB  
 DATE ISSUED: ---

**PLAN & PROFILE  
 CHESTNUT BLVD.**



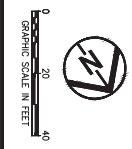
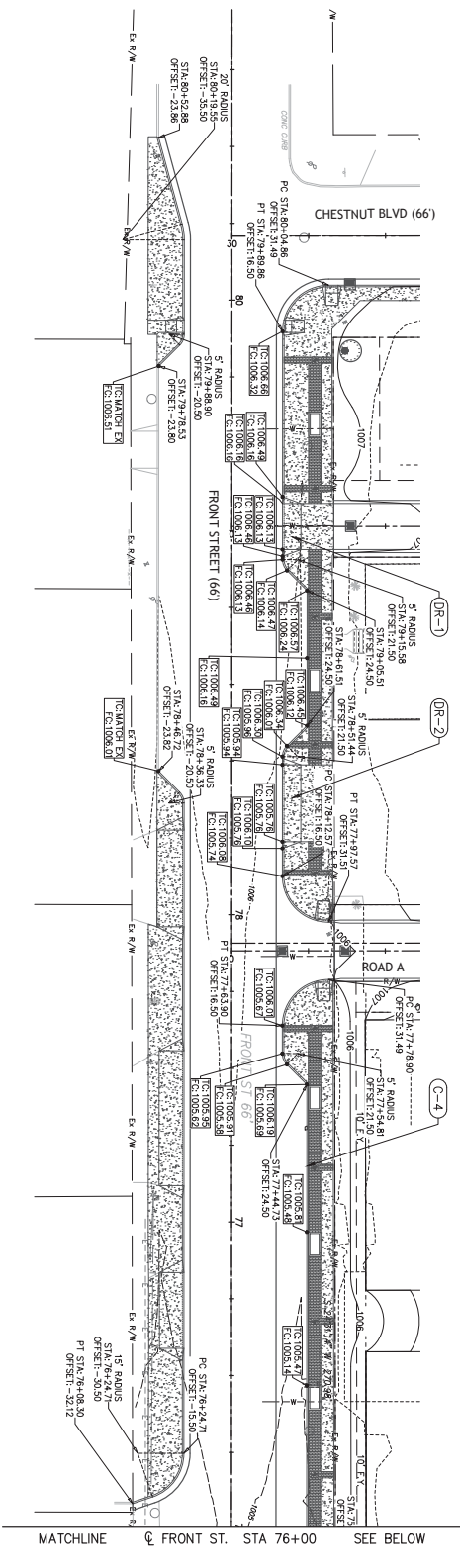
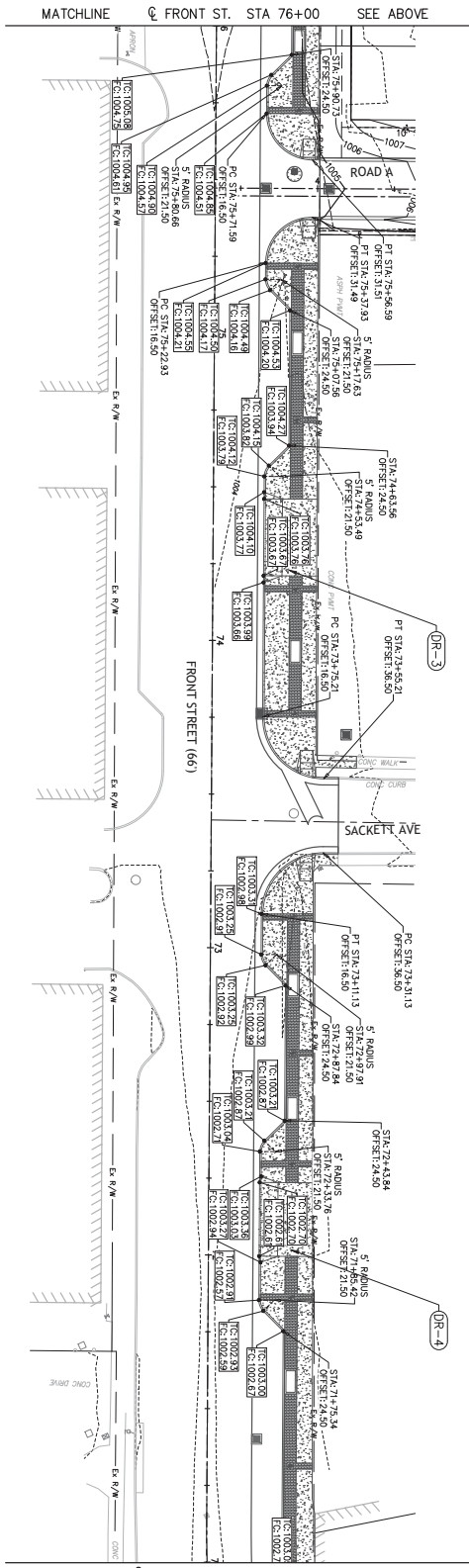
- KEYNOTES / LEGEND**
- |  |   |
|--|---|
| (C-1) PROPOSED CONCRETE CURB.              | (CR-1) PROPOSED CURB RAMP.  |
| (D-1) PROPOSED DRAINAGE STRUCTURE.         | (RM-1) RECONSTRUCT EXISTING MANHOLE FRAME AND GRATE OUTSIDE OF PROPOSED CURB. |
| (ST-1) PROPOSED STORM SEWER PIPE.          | (NP-1) NEW PAVEMENT.  |
| (A-1) ADJUST TO GRADE AND REPLACE CASTING. | (H-1) ADJUST HYDRANT AND VALVE TO GRADE.                                      |

- NOTES**
1. THE STATIONING OF THE ROADWAY IS INCREASING FROM NORTH TO SOUTH. RIGHT OFFSETS DEPICT THE WEST SIDE OF THE RIGHT OF WAY AND LEFT OFFSETS DEPICT THE EAST SIDE OF THE RIGHT OF WAY.
  2. REFER TO THE GLENS TOWN HOMES SITE PLANS FOR PROPOSED WORK OUTSIDE THE WEST RIGHT-OF-WAY.
  3. SEE SHEET 21 FOR STREETSCAPE ITEMS (PLANTERS, LIGHT POLES, DECORATIVE PAVERS, ETC.) BETWEEN THE FACE OF THE CURB AND WEST RIGHT-OF-WAY.



NOTE: ELEVATION AND HORIZONTAL LOCATION OF EXISTING UTILITY LINES SHOWN APPROXIMATE.

C:\WORK\2021\21-00225\21-00225-010\21-00225-010-010.DWG (10/11/2021 10:30:30 AM)



PROJECT NO.:	21-0025-00
DRAWN BY:	ESB
CHECKED BY:	SRB
DATE (MM/DD/YY):	03/15/20

DATE:	BY:	DESCRIPTION:

CONSTRUCTION SET

- LEGEND:**
- PROPOSED CONCRETE CURB
  - PROPOSED DRIVEWAY
- NOTES:**
1. FOR LAYOUT OF LANDSCAPING ELEMENTS, SEE SHEET 17.
  2. ALL DRIVE APERTURES SHALL BE CONSTRUCTED PER THE DIMENSIONS AND ELEVATIONS AS SHOWN IN THESE PLANS.
  3. ALL DIMENSIONS TO FACE OF CURB.
- ABBREVIATIONS:**
- BC BOTTOM OF CURB (ELEVATION)
  - TC TOP OF CURB (ELEVATION)
  - ATC ADJUST TO GRADE
  - RTR RECONSTRUCT TO GRADE
  - APP AS PER PLAN
  - TBR TO BE REMOVED

# SOUTH FRONT STREET STREETSCAPE

CUYAHOGA FALLS, CITY OF

**Environmental Design Group**  
 10000 W. 12th Street, Suite 100  
 Cleveland, OH 44115  
 Phone: (216) 231-1234  
 Email: info@edgdesign.com

**City of Cuyahoga Falls**  
 10000 W. 12th Street, Suite 100  
 Cleveland, OH 44115  
 Phone: (216) 231-1234  
 Email: info@cityoffalls.com

**LEGEND:**

(C-#) PROPOSED CONCRETE CURB

(DR-#) PROPOSED DRIVEWAY

**NOTES:**

1. FOR LAYOUT OF LANDSCAPING ELEMENTS, SEE SHEET 17.
2. ALL DRIVE APRONS SHALL BE CONSTRUCTED PER THE DIMENSIONS AND ELEVATIONS AS SHOWN IN THESE PLANS.
3. ALL DIMENSIONS TO FACE OF CURB.

BC BOTTOM OF CURB (ELEVATION)  
 TC TOP OF CURB (ELEVATION)  
 ATG ADJUST TO GRADE  
 RTG RECONSTRUCT TO GRADE  
 APP AS PER PLAN  
 TBR TO BE REMOVED

**SOUTH FRONT STREET  
 STREETSCAPE  
 CUYAHOGA FALLS, CITY OF**

**CONSTRUCTION SET**

DATE:

REVISIONS	
DATE	DESCRIPTION

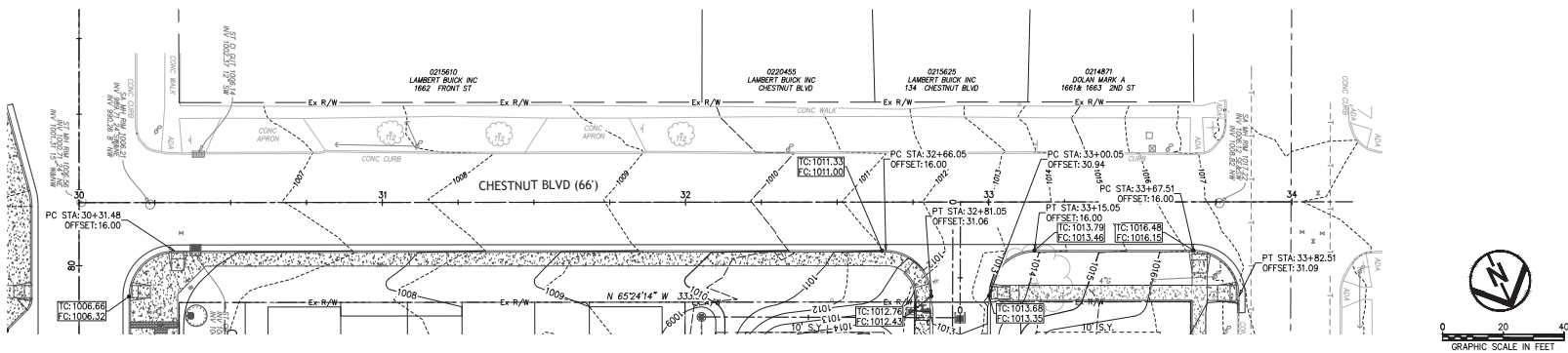
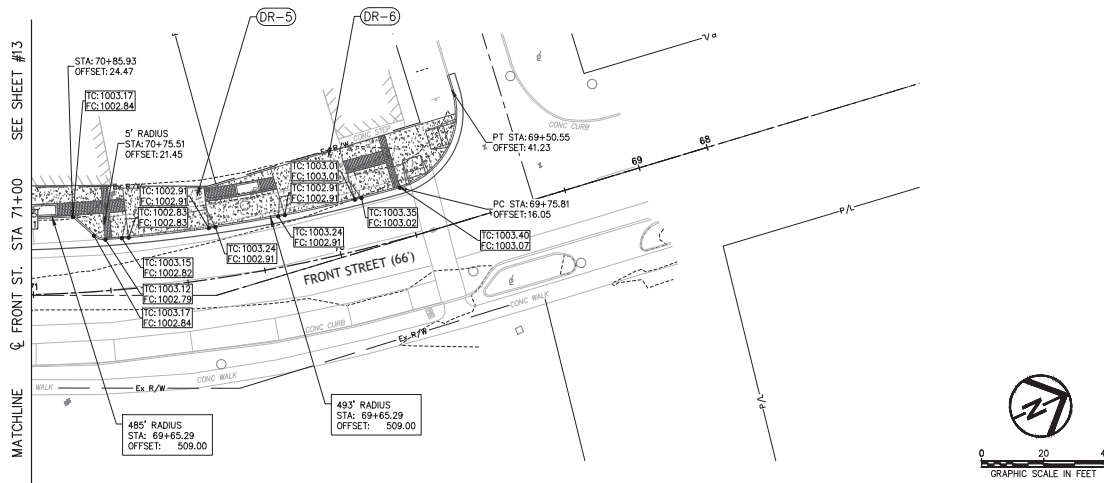
PROJECT NO.: 21-00525-010

DRAWN BY: EDC

CHECKED BY: SRB

DATE ISSUED: ---

**GRADING & LAYOUT PLAN**



C:\PROJECTS\21-00525\21-00525-010\21-00525-010-18.DWG



**SOUTH FRONT STREET  
 STREETSCAPE  
 CUYAHOGA FALLS, CITY OF**

CONSTRUCTION SET

DATE:

REVISIONS

DATE	DESCRIPTION

PROJECT NO.: 21-00235-C10

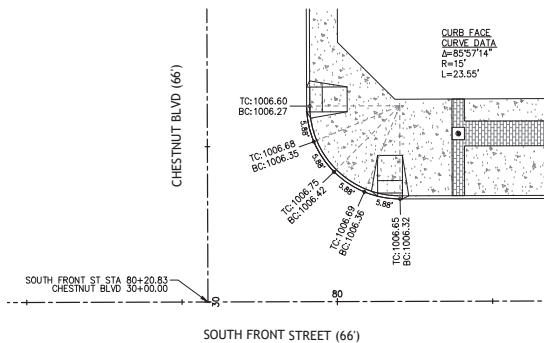
DRAWN BY: EGC

CHECKED BY: SRB

DATE ISSUED: ---

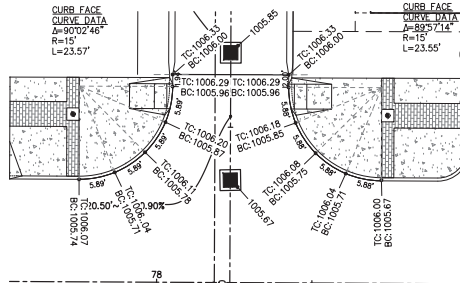
INTERSECTION  
 DETAILS

###



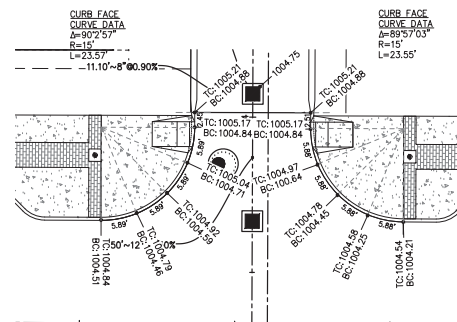
INTERSECTION AT CHESTNUT BLVD & SOUTH FRONT ST

SCALE: 1" = 10'



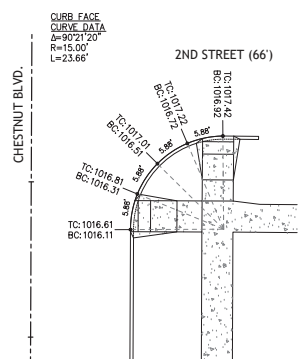
INTERSECTION AT ROAD "B" & SOUTH FRONT ST

SCALE: 1" = 10'



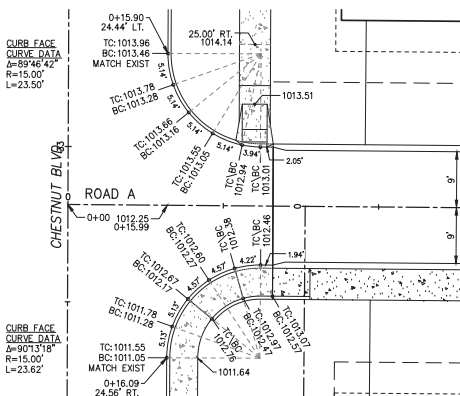
INTERSECTION AT ROAD "B" & SOUTH FRONT ST

SCALE: 1" = 10'



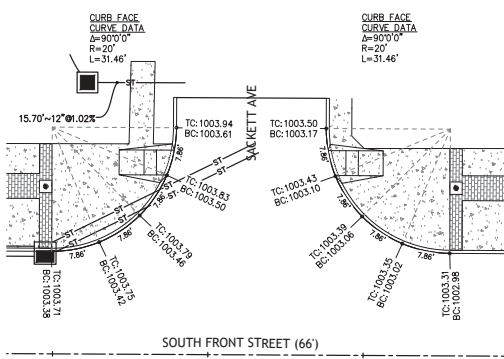
INTERSECTION AT CHESTNUT BLVD & SOUTH FRONT ST

SCALE: 1" = 10'



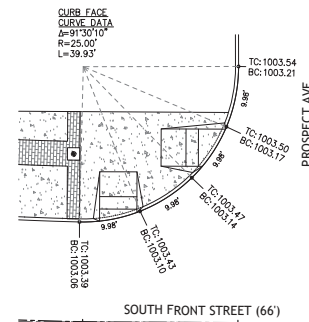
INTERSECTION AT ROAD "A" & CHESTNUT BLVD

SCALE: 1" = 10'



INTERSECTION AT SACKETT AVE & SOUTH FRONT ST

SCALE: 1" = 10'



INTERSECTION AT PROSPECT AVE & SOUTH FRONT ST

SCALE: 1" = 10'

BC BOTTOM OF CURB (ELEVATION)  
 TC TOP OF CURB (ELEVATION)

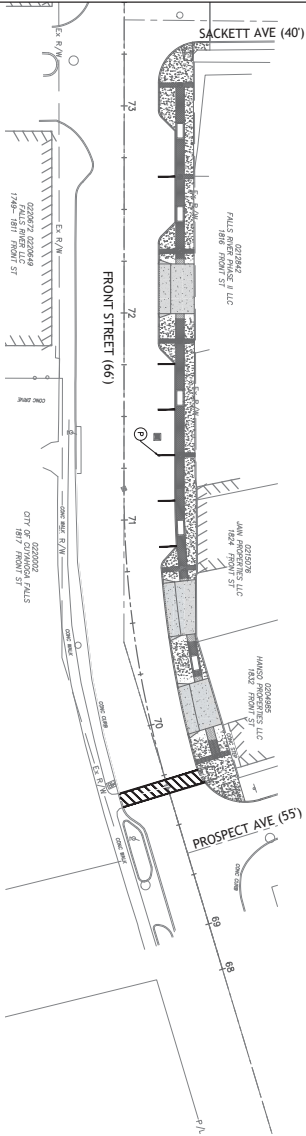
NOTES:

- 1. ALL ELEVATIONS GIVEN ALONG CURB RETURNS ARE BOTTOM OF CURB UNLESS OTHERWISE NOTED.

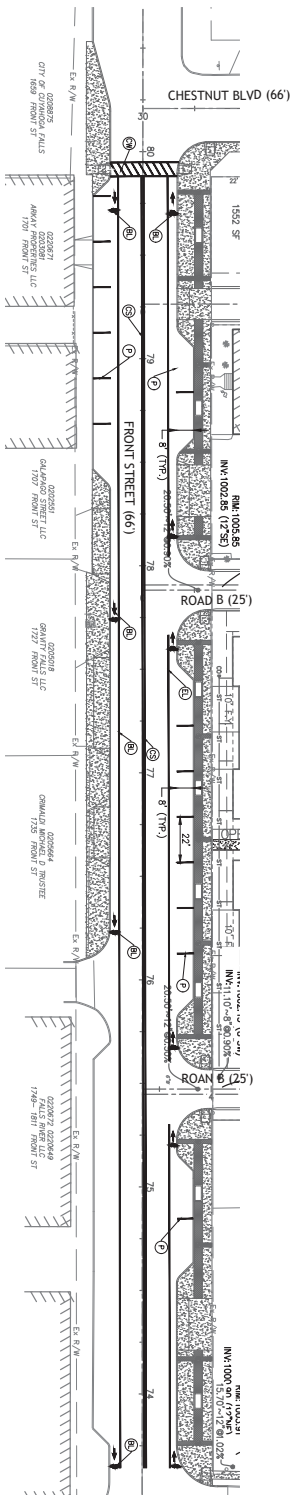


C:\CADD\03\21\03\21-00235\CADSET\DWG\STREETSCAPE\CONSTRUCTION\CONSTRUCTION SET\CONSTRUCTION SET.dwg 21-00235-C10 21-09-2021 10:50 AM

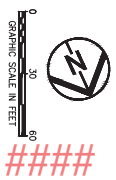
MATCHLINE @ FRONT ST. STA 74+50 SEE ABOVE



MATCHLINE @ FRONT ST. STA 74+50 SEE BELOW



- LEGEND**
- ① STOP LINE, WHITE (24" WIDE)
  - ② CENTER LINE, DOUBLE SOLID
  - ③ EDGE LINE, 4" (WHITE)
  - ④ CROSSWALK LINE, 12"
  - ⑤ PARKING STALL MARKING
  - ⑥ BKE LANE MARKING
  - ⑦ DASHED MARKING LINE
- NOTE: ALL PAVERS MARKINGS SHALL BE PER DOT'S OWN TECH PAVEMENT MARKINGS.



DATE: \_\_\_\_\_

REVISIONS

NO.	DATE	DESCRIPTION

PROJECT NO.: 21-0025-010  
 DRAWN BY: DSM  
 CHECKED BY: SBR  
 DATE: 01/09/2023

**CONSTRUCTION SET**

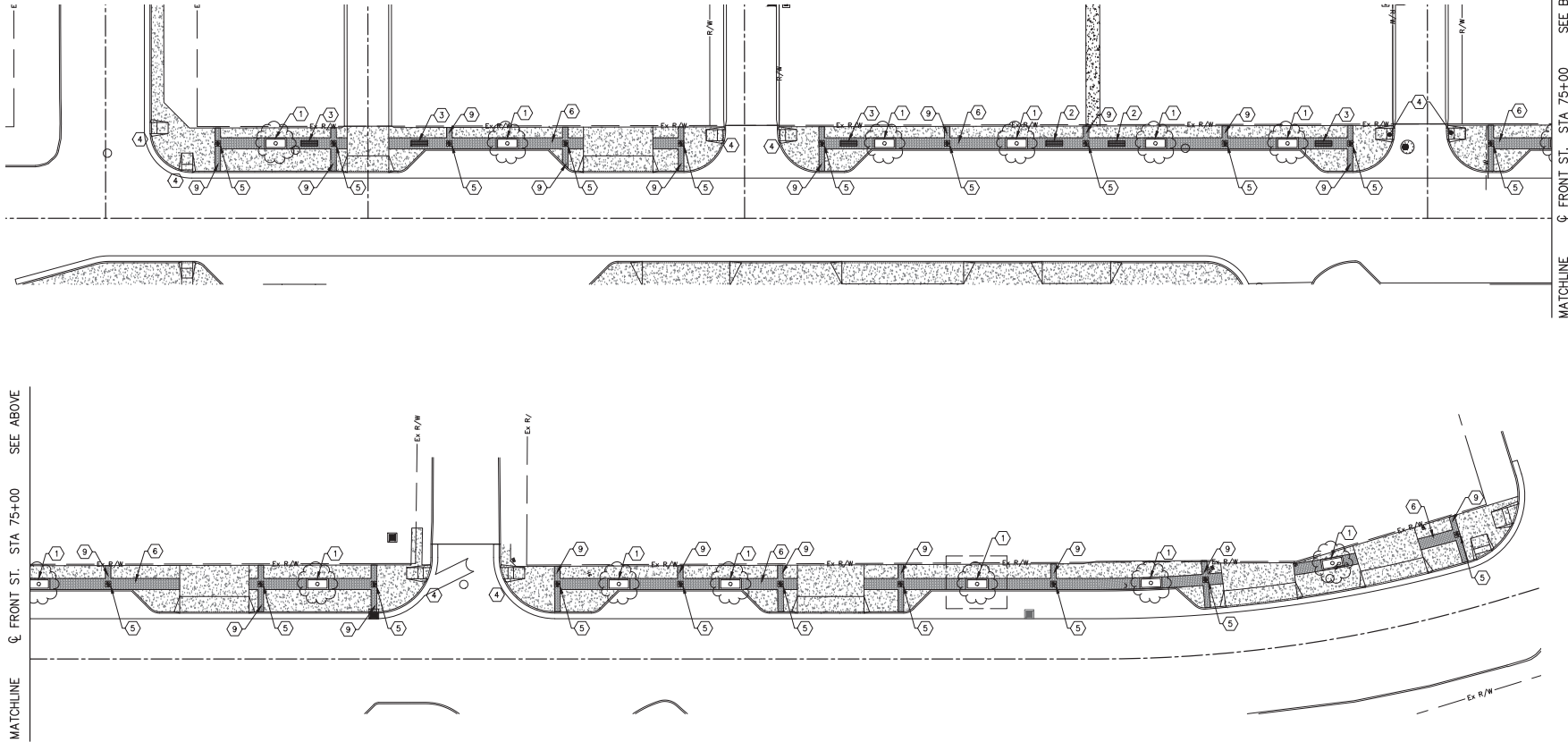
**PAYEMENT MARKING & SIGNAGE PLAN**

**SOUTH FRONT STREET  
STREETSCAPE**  
CUYAHOGA FALLS, CITY OF



**LANDSCAPE PLAN**  
 CUYAHOGA FALLS, CITY OF

**CONSTRUCTION SET**

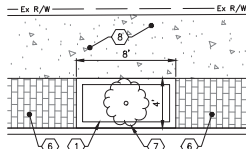


Q FRONT ST. STA 75+00 SEE ABOVE

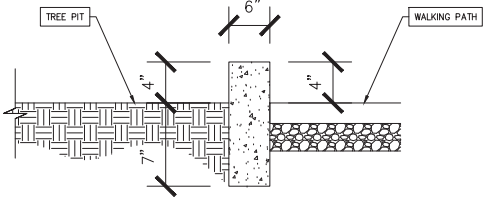
Q FRONT ST. STA 75+00 SEE BELOW

MATCHLINE

Ex R/W



1 ENLARGED VIEW - NOTE 1  
 21 NOT TO SCALE



1 CURB DETAIL AT PLANTER  
 21 NOT TO SCALE

**LANDSCAPE PLAN NOTES** ①

1. PLANTER, TYP. SEE DETAIL THIS SHEET.
2. BENCHES, TYP.
3. BACKLESS BENCHES, TYP.
4. TRUNCATED DOMES AT CROSSWALK.
5. LIGHT POSTS, TYP.
6. DECORATIVE PAVERS. SEE MATERIAL LIST.
7. TREE; TYP.
8. CONCRETE WALKWAY; TYP.
9. DECORATIVE PAVERS. SEE MATERIAL LIST.

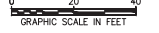
**MATERIAL LIST:**

1. 4" CONCRETE CURB, SEE DETAIL THIS SHEET.
2. BENCH-VICTOR STANLEY, CM-324 - BLACK W/ WALNUT RECYCLED PLASTIC SLATS.
3. BACKLESS BENCHES - VICTOR STANLEY, CM-214 - BLACK WALNUT RECYCLED PLASTIC SLATS.
5. LIGHT LUMINAIRE - STERNBERG 1-1940LED/56/R3-C0365/EZ/BARRCAST5/NDL/8K LED FIXTURE AND SCROLL ARM, ON A 7700RFP5-16AG /1-GF/ALPUC/1-DBA/ BK DECOD LIGHT POLE WITH (1) DOUBLE BANNER ARM.
6. UNIT PAVER - ENDICOTT, HEAVY VEHICULAR PAVER, 2-5/8" X 4" X 8" - MEDIUM IRONSPOT #46.
7. ULMUS PARVIFOLIA "BOSQUE" - BOSQUE ELM, 3" CALIPER.
9. UNIT PAVER - ENDICOTT, HEAVY VEHICULAR PAVER, 2-5/8" X 4" X 8" - MANGANESE IRONSPOT.

DATE: \_\_\_\_\_

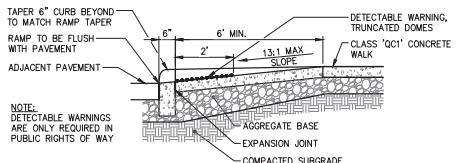
REVISIONS	
Δ	DATE DESCRIPTION

PROJECT NO.: 21-00525-010  
 DRAWN BY: EDC  
 CHECKED BY: SRB  
 DATE ISSUED: ---

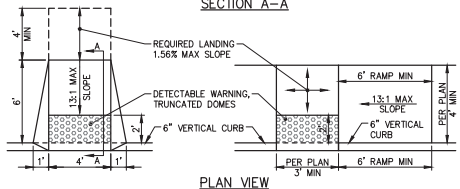


LANDSCAPE PLAN

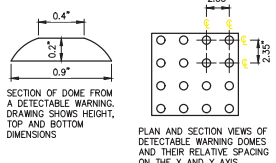
CUYAHOGA FALLS, CITY OF, 1000 UNIVERSITY AVE, SUITE 100, CLEVELAND, OH 44114, PH: (216) 525-1300, WWW.EDGDESIGN.COM



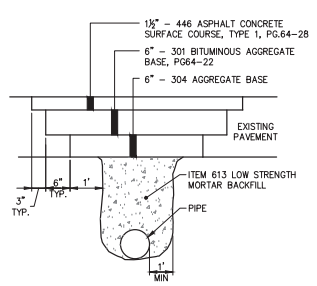
SECTION A-A



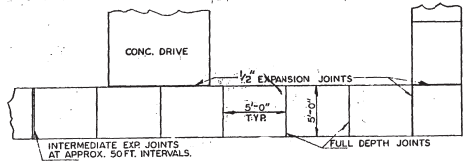
PLAN VIEW



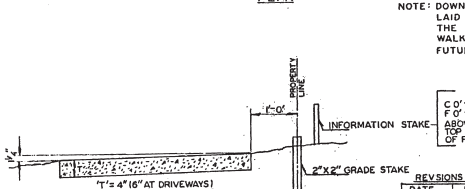
NOTE: THE MATERIAL USED TO PROVIDE CONTRAST SHOULD BE AN INTEGRAL PART OF THE MATERIAL AND SHOULD CONTRAST BY AT LEAST 70% CONTRAST IN PERCENT IS DETERMINED BY:  
 $CONTRAST = \frac{B1 - B2}{B1} \times 100$   
 WHERE B1 = LIGHT REFLECTANCE VALUE (LRV) OF THE LIGHTER AREA AND B2 = LRV OF THE DARKER AREA  
 TRUNCATED DOMES ARE ONLY REQUIRED IN PUBLIC RIGHTS OF WAY.



NOTE: ALL WORK ASSOCIATED WITH THE PAVEMENT REPLACEMENT DETAIL EXCEPT FOR THE 446 ASPHALT CONCRETE SURFACE COURSE IS CONSIDERED INCIDENTAL TO THE INSTALLATION OF THE PERTINENT 603 ITEM.



PLAN



SECTION

NOTE: DOWNSPOUT PIPE TO BE LAID TIGHT AGAINST THE BOTTOM OF NEW WALK, TO INSURE MEETING FUTURE CURB.

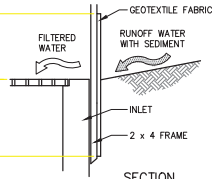
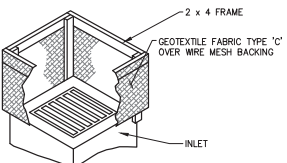
SAMPLE C 0'-6\"/>

REVISIONS		
DATE	REVISION	APPROVED
6-3-04		

CITY OF CUYAHOGA FALLS, O.  
 DEP'T. OF PUBLIC SERVICE  
 ENGINEERING DIVISION  
**CONSTRUCTION STANDARD**

1 ACCESSIBLE RAMPS  
 22 NOT TO SCALE

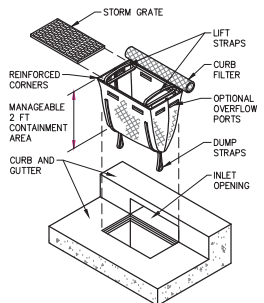
- NOTES
- THIS METHOD OF INLET PROTECTION IS APPLICABLE WHERE THE INLET DRAINS A RELATIVELY FLAT AREA (SLOPES NO GREATER THAN 5 PERCENT) WHERE SHEET OR OVER-LAND FLOWS (NOT EXCEEDING 0.5 CFS) ARE TYPICAL.
  - THIS INLET PROTECTION TO BE USED IN DITCHES. FOR CURB STYLE INLETS, USE "DANDY BAG" OR APPROVED EQUAL.



SECTION

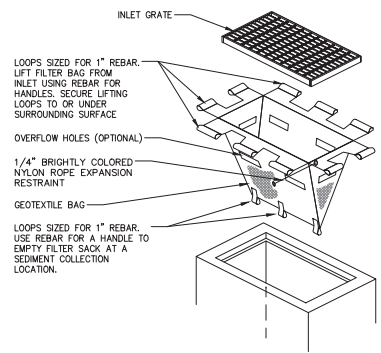
2 TRUNCATED DOMES  
 22 NOT TO SCALE

- NOTES
- REMOVE TRAPPED SEDIMENT WHEN BRIGHTLY COLORED EXPANSION RESTRAINT CAN NO LONGER BE SEEN.
  - GEOTEXTILE SHALL BE A WOVEN POLYPROPYLENE FABRIC OR APPROVED EQUAL.
  - PLACE AN OIL ABSORBENT PAD OR PILLOW OVER INLET GRATE WHEN OIL SPILLS ARE A CONCERN.
  - INSPECT PER REGULATORY REQUIREMENTS.
  - THE WIDTH AND LENGTH OF THE FILTER SACK SHALL MATCH THE INSIDE WIDTH AND LENGTH OF THE GRATED INLET BOX.
  - THE DEPTH OF THE FILTER SACK SHALL BE BETWEEN 18" AND 36".



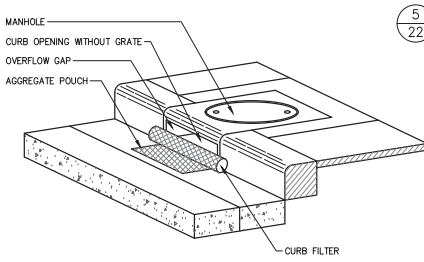
INLET PROTECTION - SILT FENCE  
 22 NOT TO SCALE

- NOTES
- REMOVE TRAPPED SEDIMENT WHEN BRIGHTLY COLORED EXPANSION RESTRAINT CAN NO LONGER BE SEEN.
  - GEOTEXTILE SHALL BE A WOVEN POLYPROPYLENE FABRIC OR APPROVED EQUAL.
  - PLACE AN OIL ABSORBENT PAD OR PILLOW OVER INLET GRATE WHEN OIL SPILLS ARE A CONCERN.
  - INSPECT PER REGULATORY REQUIREMENTS.
  - THE WIDTH AND LENGTH OF THE FILTER SACK SHALL MATCH THE INSIDE WIDTH AND LENGTH OF THE GRATED INLET BOX.
  - THE DEPTH OF THE FILTER SACK SHALL BE BETWEEN 18" AND 36".

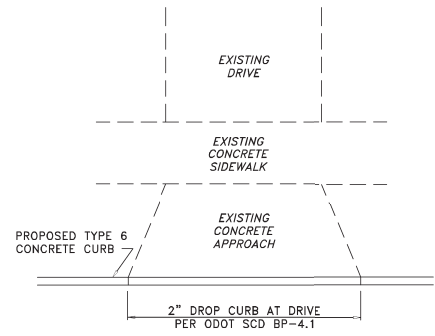


INLET PROTECTION - CATCH BASIN SACK  
 22 NOT TO SCALE

INLET PROTECTION - CURB FILTER  
 22 NOT TO SCALE



4 STANDARD SIDEWALK LAYOUT  
 22 NOT TO SCALE



5 TYPICAL DRIVE APPROACH DETAIL  
 22 NOT TO SCALE

CONSTRUCTION SET

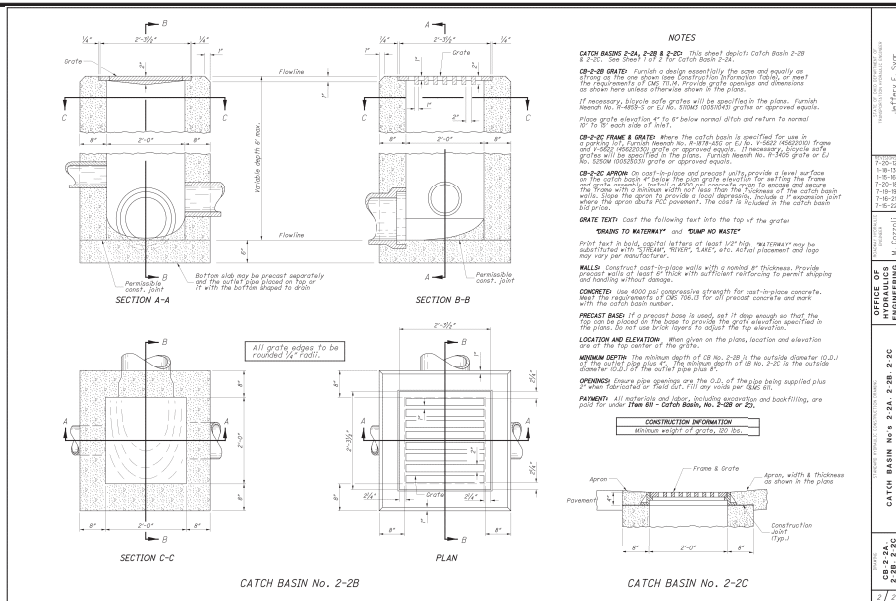
DATE: \_\_\_\_\_

REVISIONS	
DATE	DESCRIPTION

PROJECT NO.: 21-00525-010  
 DRAWN BY: EGC  
 CHECKED BY: SRB  
 DATE ISSUED: ---

CONSTRUCTION DETAILS

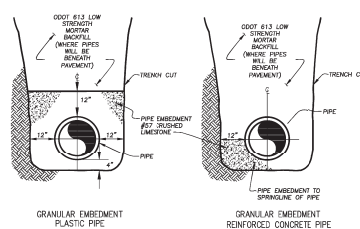
CITY OF CUYAHOGA FALLS, OHIO 44021.1433 SOUTH FRONT STREET STREETScape IMPROVEMENT PROJECT PLAN CONSTRUCTION SET 21-0025.010 08/05/2023 10:34 AM



OFFICE OF HYDRAULICS & ENGINEERING  
 PROJECT: SOUTH FRONT STREET STREETScape IMPROVEMENT  
 DRAWING: CATCH BASIN No. 2-2A, 2-2B, 2-2C  
 DATE: 08/05/2023  
 23 OF 23

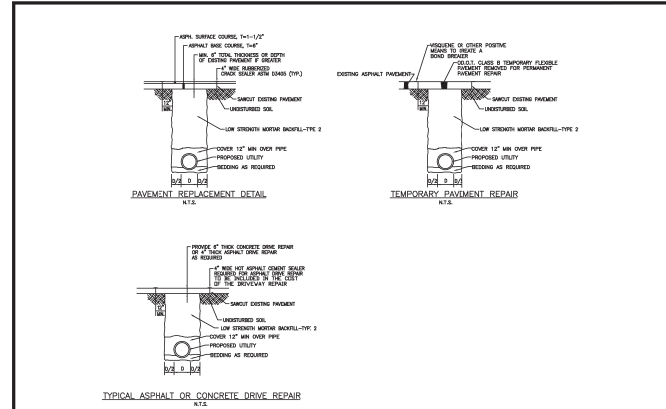
**SOUTH FRONT STREET  
 STREETSCAPE  
 CUYAHOGA FALLS, CITY OF**

**2 23 CATCH BASIN (ODOT CB-2-2C)**  
 NOT TO SCALE



NOTE: WATER MAINS UNDER PAVEMENTS SHALL BE DESIGNED AND BACKFILLED PER CITY OF CUYAHOGA FALLS SPECIFICATIONS, INCLUDING ITEM 613 LCM

**5 23 SEWER TRENCH DETAIL**  
 NOT TO SCALE



**CITY OF CUYAHOGA FALLS ENGINEERING DEPARTMENT CONSTRUCTION STANDARD**

**TYPICAL PAVEMENT REPAIR FOR TRENCHES**

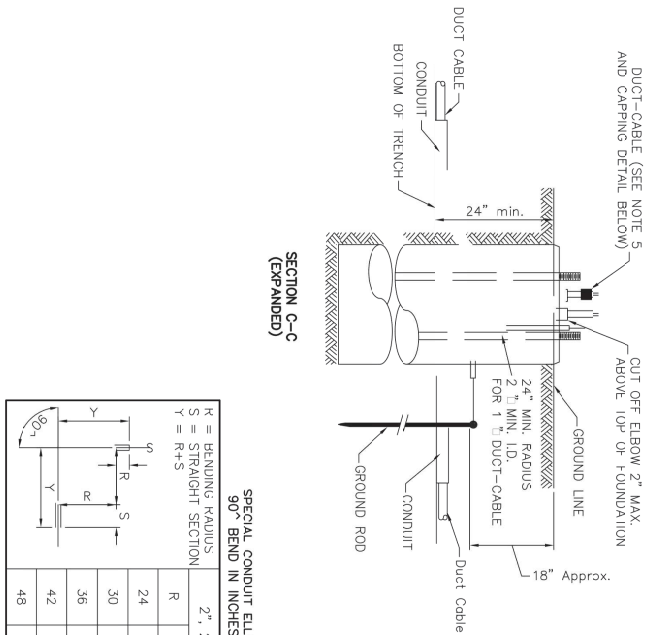
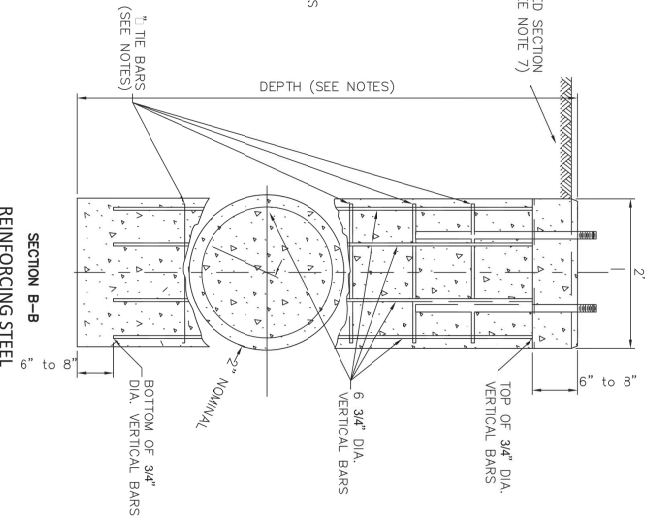
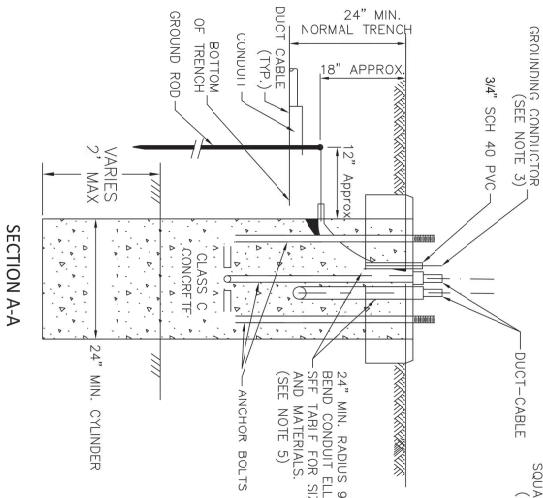
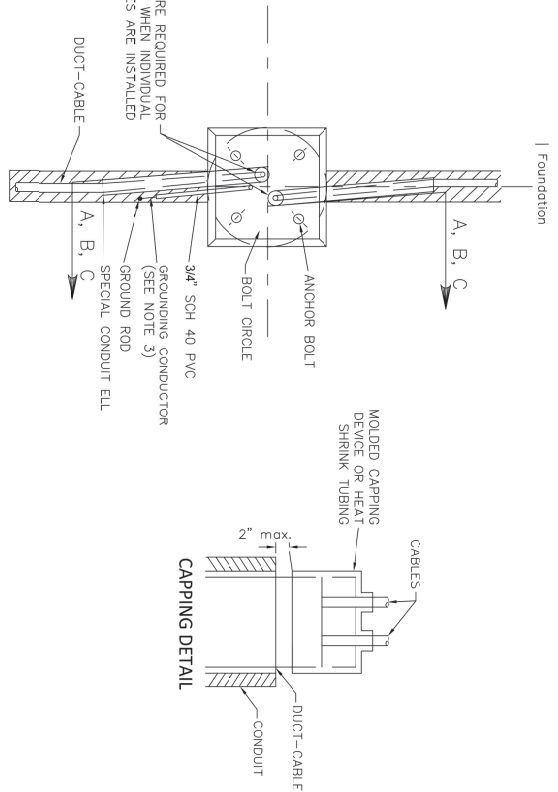
**DRAWING SD-##**

**2 23 TYPICAL PAVEMENT REPAIR FOR TRENCHES DETAIL**  
 NOT TO SCALE

**CONSTRUCTION SET**

DATE:	
REVISIONS	
<b>Δ</b>	<b>DATE DESCRIPTION</b>

**CONSTRUCTION DETAILS**



**SPECIAL CONDUIT ELLS  
90° BEND IN INCHES**

R	S	Y
24	11	35
30	11	41
36	11	47
42	12	54
48	12	60

R = BENDING RADIUS  
S = STRAIGHT SECTION  
Y = R+S

- NOTES:**
- UP-SLOPE SIDE OF FOUNDATION FOR POLE WITH BREAKAWAY FEATURE SHALL BE FLUSH WITH GRADE IF POLE IS EXPOSED TO TRAFFIC.
  - FOR POLES HAVING A SUPPORT HEIGHT OF LESS THAN 40', 8" FOR POLES HAVING A SUPPORT HEIGHT OF THRU 44', 10" FOR POLES HAVING A SUPPORT HEIGHT OF THRU 48', 12" FOR POLES HAVING A SUPPORT HEIGHT OF 50' THRU 54', 1/2" DIAMETER THE BARS REQUIRED AS FOLLOWS:  
4 NO. 4 DIAMETER THE BARS FOR 6" DEPTH  
6 NO. 4 THE BARS FOR 10' DEPTH  
ROTATE BARS TO CLEAR CONDUITS.
  - GROUNDING CONDUCTOR SHALL BE 4 AWG. INSULATED, FREE AND UNBUNDLED 3/4" SCH 40 PVC AND CONNECT AS SHOWN. USE AND THROCK CONTACT SCREW AND CONNECT AS SHOWN. TWO COATS OF INSULATING VARNISH OVER EXOTHERMIC WELD AND EXPANDED CONDUIT.
  - FOR ANCHOR BOLT DATA SEE SCD HL-1013, POLE BASE DETAILS.
  - WHERE 2" OR 3" DIAMETER CONDUIT TERMINATES IN A SQUARED SECTION, 15' CONDUIT LENGTHS IN THE FOUNDATION CONDUIT BE ELBOWS CONTAINING DISTRIBUTION CABLE SHALL TERMINATE IN CONDUIT TO CATCH THE CONDUIT ELBOW IN THE LIGHT POLE ON CONDUIT. THE VACANT CONDUIT ELBOW IN THE LIGHT POLE FOR FOUNDATION SHALL BE STUBBED OFF AND REINFORCING STEEL MAY BE ASSEMBLED IN CASES BY APPROVED WELDING OF BARS SUBJECT TO APPROVAL OF THE ENGINEER. CASES MAY BE ASSEMBLED IN A SPIRAL.
  - SQUARED SECTION IN TOP 5' OF FOUNDATION IS REQUIRED ONLY WHEN FOUNDATION IS IN THE LANE OR CONTIGUOUS TO OR IN PAVED SUBGRADE.
  - PRIOR TO INSTALLING THE LIGHT POLE FOUNDATIONS AND EXISTING UTILITIES AND SERVICE LATERALS NUMBER TO AVOID DAMAGE DURING INSTALLATION.

**Environmental Design Group**  
Environmental Engineering & Construction  
 10000 East 17th Avenue  
 Suite 200  
 Denver, CO 80232  
 Tel: 303.751.1100  
 Fax: 303.751.1101  
 www.edginc.com

## SOUTH FRONT STREET STREETSCAPE

CUYAHOGA FALLS, CITY OF

DATE: \_\_\_\_\_  
 REVISIONS:  
 NO. DATE DESCRIPTION  
 \_\_\_\_\_  
 \_\_\_\_\_  
 \_\_\_\_\_  
 \_\_\_\_\_

PROJECT NO.: 21-0925-010  
 DRAWN BY: EDS  
 CHECKED BY: SRS  
 DATE: 09/28/20

**CONSTRUCTION SET**

24 OF 24

DATE: \_\_\_\_\_  
 REVISIONS:  
 NO. DATE DESCRIPTION  
 \_\_\_\_\_  
 \_\_\_\_\_  
 \_\_\_\_\_  
 \_\_\_\_\_

**LIGHTING DETAIL**

24 OF 24