

2
3
4
5 CITY OF CUYAHOGA FALLS, OHIO

6
7 ORDINANCE NO. 64 - 2013

8
9 AN ORDINANCE APPROVING THE PRELIMINARY AND
10 FINAL SUBDIVISION PLAT OF PORTAGE CROSSING
11 NO. 1 SUBDIVISION, VACATING PORTIONS OF
12 COOLIDGE AVENUE, 21ST STREET, AND TWO SERVICE
13 DRIVES LOCATED THEREIN, AND DECLARING AN
14 EMERGENCY.

15
16 WHEREAS, Art. VIII, §1.7 of the Charter of the City of Cuyahoga Falls requires
17 that all affirmative decisions made by the Planning Commission be submitted to
18 Council; and

19
20 WHEREAS, all subdivision of land in the city is subject to the conditions set forth
21 in Sections 1113.03 and 1113.04 of the Codified Ordinances and prior review and
22 approval of the Planning Commission; and

23
24 WHEREAS, on September 17, 2013 the Planning Commission approved the
25 preliminary and final subdivision plat of the Portage Crossing No. 1 Subdivision
26 (Parcel Nos. 02,20436, 02-05241, 02-05240, 02-14014, 02-01811, 02-18517, 02-
27 18768,02-20437,02-20439, and 02-02885) bounded by State Road, Portage Trail,
28 21st Street, and Schiller Avenue, within the City of Cuyahoga Falls, Ohio,

29
30 NOW, THEREFORE, BE IT ORDAINED by the Council of the City of Cuyahoga
31 Falls, County of Summit, and State of Ohio, that:

32
33 Section 1. This Council approves the preliminary and final plat of the Portage
34 Crossing No. 1 Subdivision, in accordance with the Cuyahoga Falls General
35 Development Code regulations as set forth in the Codified Ordinances and as
36 approved by the Planning Commission, subject to the conditions contained in File P-
37 27-13-S, and as further depicted on the subdivision plat attached hereto as Exhibit
38 "A."


39
40 Section 2. Portions of Coolidge Avenue, 21st Street, Service Drive No. 1 and
41 Service Drive No. 3 (of the former J.H. Schiller West Falls Allotment) as shown on the
42 subdivision plat for vacation are hereby vacated. Title to vacated public streets and
43 ways shall vest in the abutting property owners according to the centerline
44 established for said streets and ways by the City Engineer.

45
46 Section 3. Any other ordinances or resolutions or portions of ordinances and
47 resolutions inconsistent herewith are hereby repealed, but any ordinances and
48 resolutions not inconsistent herewith and which have not previously been repealed
49 are hereby ratified and confirmed.

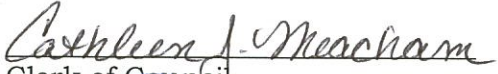
51 Section 4. It is found and determined that all formal actions of this Council
52 concerning and relating to the adoption of this ordinance were adopted in an open
53 meeting of this Council, and that all deliberations of this Council and of any of its
54 committees that resulted in such formal action, were in meetings open to the public,
55 in compliance with all legal requirements, to the extent applicable, including Chapter
56 107 of the Codified Ordinances.

57
58 Section 5. This ordinance is hereby declared to be an emergency measure
59 necessary for the preservation of the public peace, health, safety, convenience and
60 welfare of the City of Cuyahoga Falls and the inhabitants thereof, for the reason that
61 it is immediately necessary to permit timely and appropriate development of this
62 property, and provided it receives the affirmative vote of two thirds of the members
63 elected or appointed to Council, it shall take effect and be in force immediately upon
64 its passage and approval by the Mayor; otherwise it shall take effect and be in force
65 at the earliest period allowed by law.

66
67
68 Passed: 10-14-13

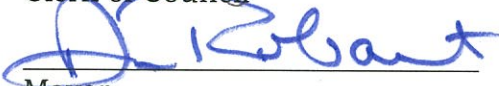


President of Council



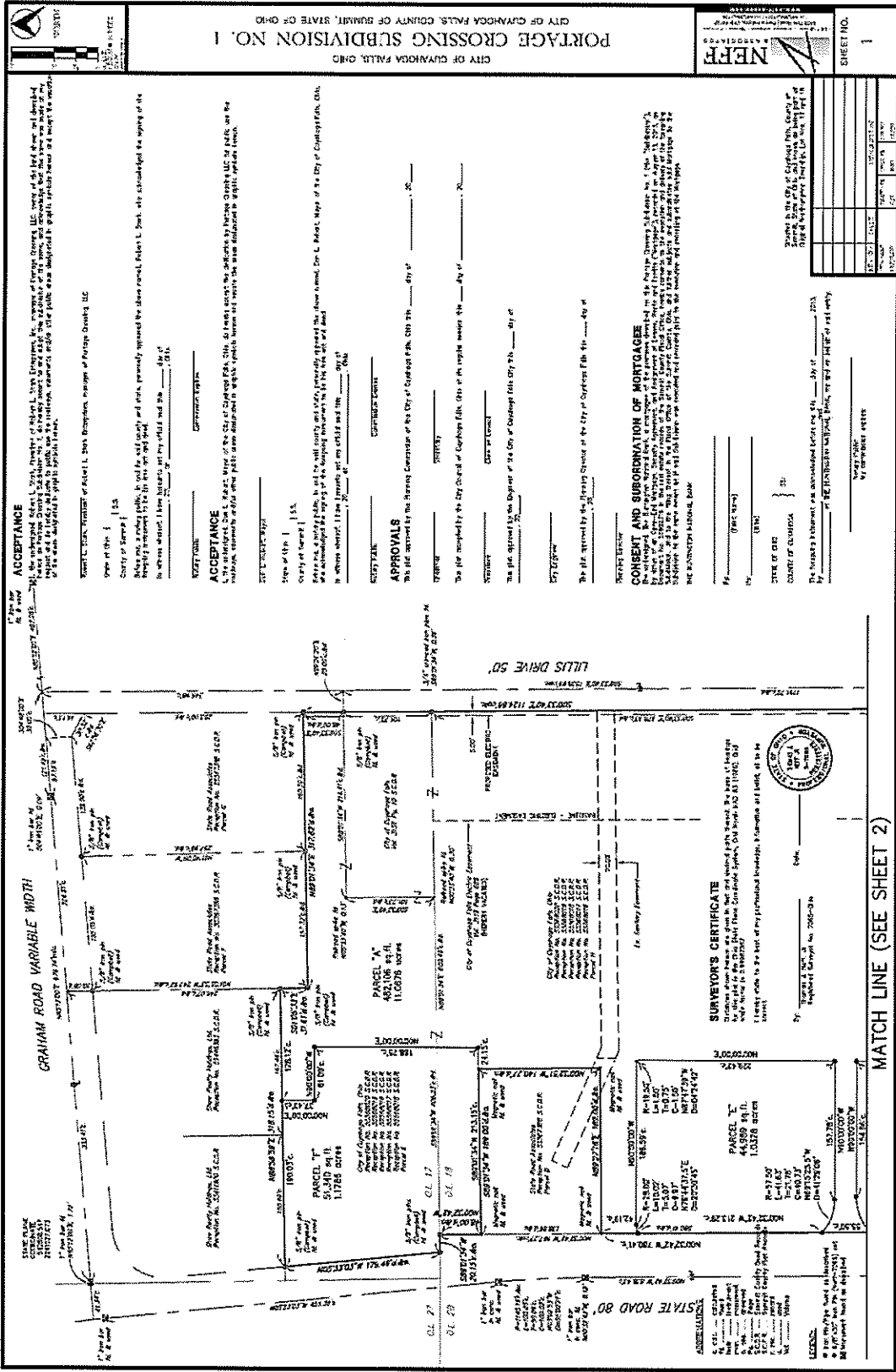
Clerk of Council

69
70
71
72
73
74 Approved: 10/16/13



Mayor

75
76
77 9/23/13



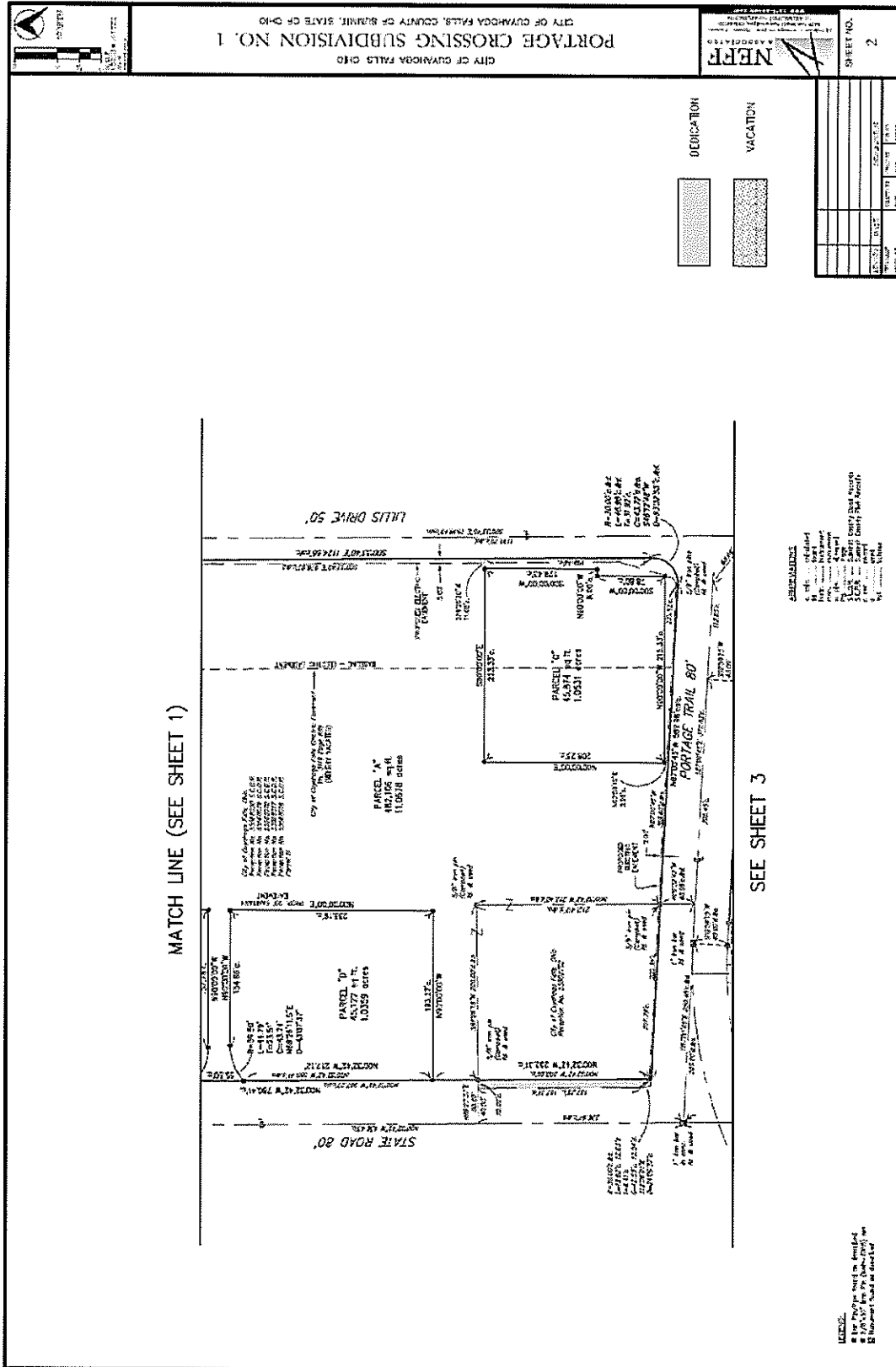
PORTAGE CROSSING SUBDIVISION NO. 1
 CITY OF CUYAHOGA FALLS, OHIO

NEFP
 NATIONAL ENGINEERING FUNDING PROGRAM
 ASSOCIATIONS

SHEET NO. 1

DATE	12/15/2011
SCALE	AS SHOWN
PROJECT	PORTAGE CROSSING SUBDIVISION NO. 1
OWNER	THE CITY OF CUYAHOGA FALLS, OHIO
DESIGNER	THE SURVEYOR GENERAL

MATCH LINE (SEE SHEET 2)

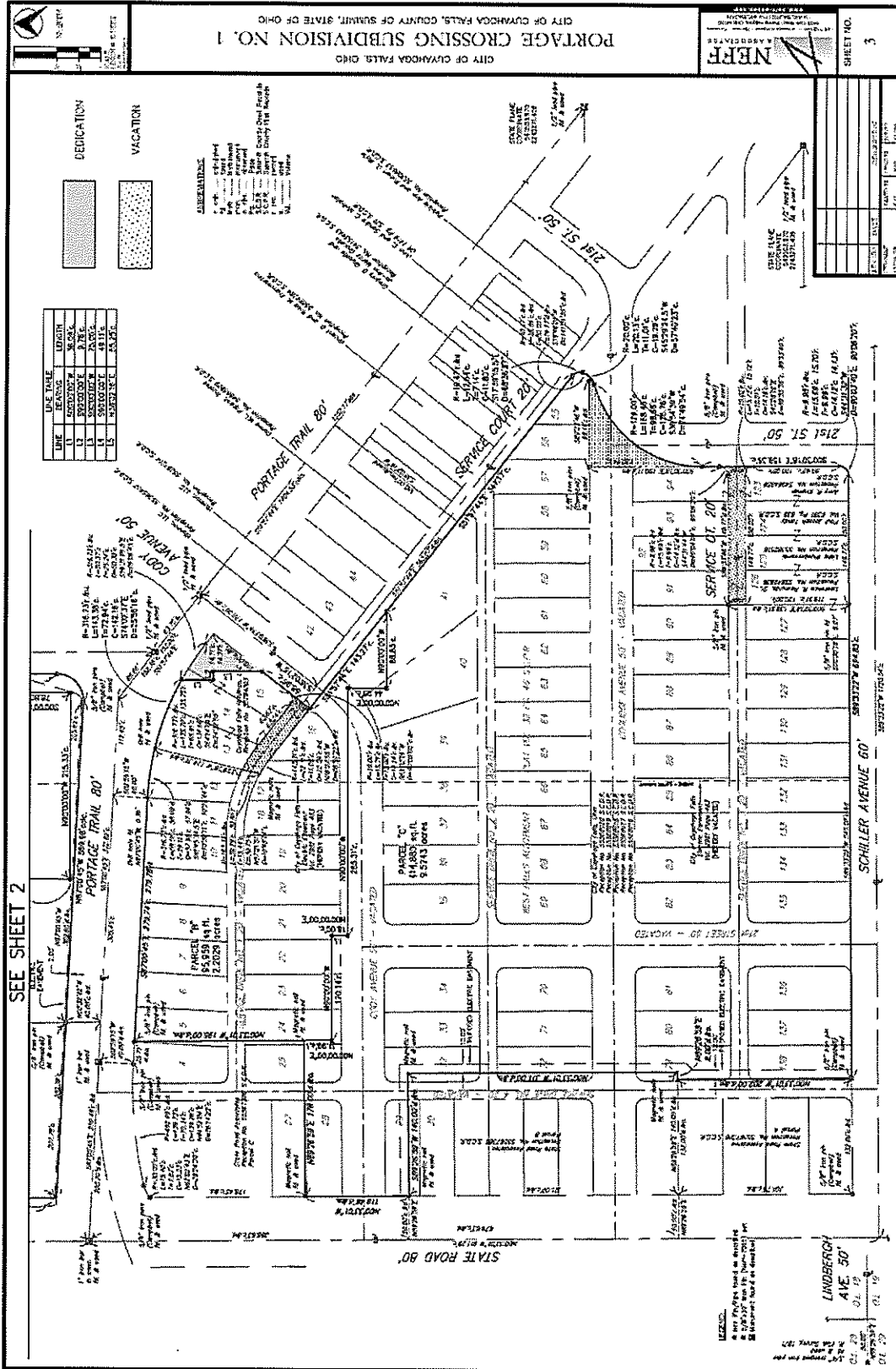


CITY OF QUINCY FALLS, COUNTY OF SUMMIT, STATE OF OHIO
PORTAGE CROSSING SUBDIVISION NO. 1

NEFF
 ENGINEERS & ARCHITECTS
 1000 W. MAIN ST., SUITE 100
 QUINCY, OHIO 43074
 PHONE: (614) 233-1111
 FAX: (614) 233-1112
 WWW.NEFFENGINEERS.COM

SHEET NO. **2**

NO.	DATE	DESCRIPTION
1	08/27/13	PRELIMINARY
2	09/10/13	FINAL



NRFE
 NORTON ROAD & RAILROAD ENGINEERING
 11111 N. RIVERVIEW BLVD., SUITE 100
 CLEVELAND, OHIO 44130
 (216) 751-1111
 FAX (216) 751-1112

SHEET NO. 3